

Anti-PTGS1 Antibody (R1S27)

Summary

Catalog No.	RHD55901
Clone ID	R1S27
Host species	Rabbit
Tested applications	IF: 1:50-1:200, IHC: 1:50-1:100, IP: 1:20, WB: 1:500-1:1000
Species reactivity	Human, Mouse, Rat
Form	Liquid
Storage buffer	0.01M PBS, pH 7.4, 0.05% BSA, 50% Glycerol, 0.05% Sodium azide.
Concentration	1 mg/ml
Purity	>95% by SDS-PAGE.
Clonality	Monoclonal
Isotype	IgG
Applications	IF, IHC, IP, WB
Target	COX-1, Prostaglandin-endoperoxide synthase 1, PGH synthase 1, Prostaglandin H2 synthase 1, Cyclooxygenase-1, PHS 1, PTGS1, Prostaglandin G/H synthase 1, COX1, PGHS-1
Purification	Protein A/G purified from cell culture supernatant.
Endotoxin level	Please contact with the lab for this information.
Accession	P23219

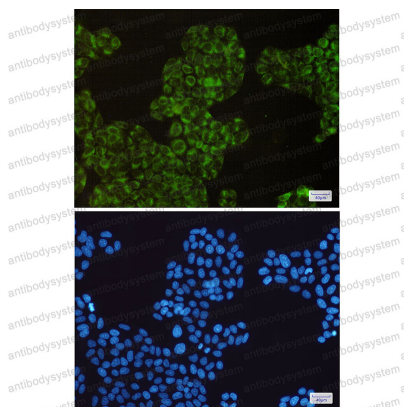
Stability and Storage

Use a manual defrost freezer and avoid repeated freeze thaw cycles. Store at 4 °C for frequent use. Store at -20 °C for twelve months from the date of receipt.

Note

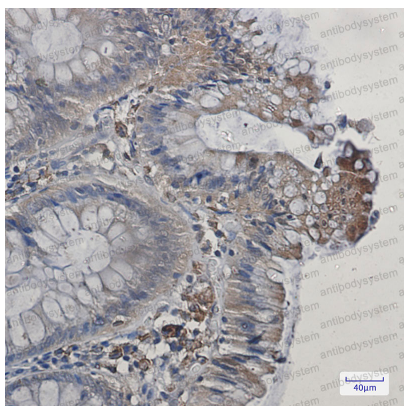
For research use only.

Data Image



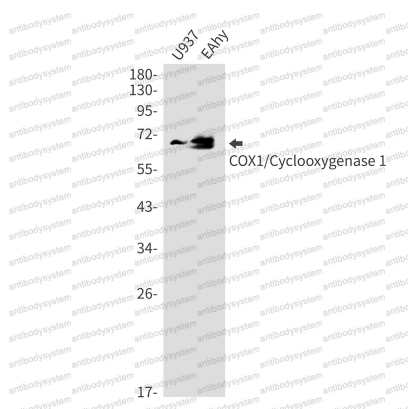
Immunofluorescence

Immunocytochemistry analysis of COX1/Cyclooxygenase 1(green) in Hela using COX1/Cyclooxygenase 1 antibody, and DAPI(blue)



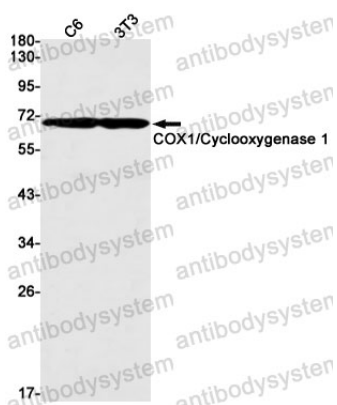
Immunohistochemical

Immunohistochemistry analysis of paraffin-embedded Human colon cancer using COX1/Cyclooxygenase 1 antibody. High-pressure and temperature Sodium Citrate pH 6.0 was used for antigen retrieval.



Western blot

Western blot analysis of COX1/Cyclooxygenase 1 in U937, EAhy lysates using Cyclooxygenase 1 antibody.



Western blot

Western blot analysis of COX1/Cyclooxygenase 1 in C6, 3T3 lysates using COX1/Cyclooxygenase 1 antibody.