

Anti-TCEA1 Antibody (R1S22)

Summary

Catalog No.	RHD55802
Clone ID	R1S22
Host species	Rabbit
Tested applications	IF: 1:50-1:200, IHC: 1:100-1:200, IP: 1:20-1:50, WB: 1:1000-1:2000
Species reactivity	Human, Mouse, Rat
Form	Liquid
Storage buffer	0.01M PBS, pH 7.4, 0.05% BSA, 50% Glycerol, 0.05% Sodium azide.
Concentration	1 mg/ml
Purity	>95% by SDS-PAGE.
Clonality	Monoclonal
Isotype	IgG
Applications	IF, IHC, IP, WB
Target	Transcription elongation factor S-II protein 1, TCEA1, Transcription elongation factor TFIIS.o, GTF2S, Transcription elongation factor A protein 1, TFIIS
Purification	Protein A/G purified from cell culture supernatant.
Endotoxin level	Please contact with the lab for this information.
Accession	P23193

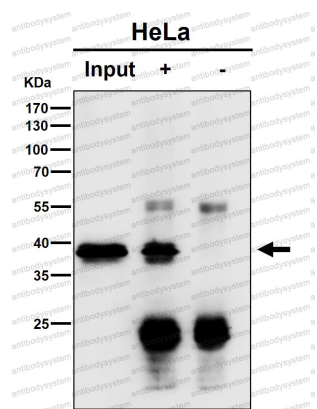
Stability and Storage

Use a manual defrost freezer and avoid repeated freeze thaw cycles. Store at 4 °C for frequent use. Store at -20 °C for twelve months from the date of receipt.

Note

For research use only.

Data Image



Immunoprecipitation

Immunoprecipitate (IP) analysis using the Antibody at 1:50 dilution. (wb at 1:1K dilution)



Western blot

Western blot analysis of TCEA1 expression in HeLa cell lysate.