

Anti-Phospho-CBL (Ser669) Antibody (R1S13)

Summary

Catalog No.	RHD53602
Clone ID	R1S13
Host species	Rabbit
Tested applications	WB: 1:500-1:1000
Species reactivity	Human
Form	Liquid
Storage buffer	0.01M PBS, pH 7.4, 0.05% BSA, 50% Glycerol, 0.05% Sodium azide.
Concentration	1 mg/ml
Purity	>95% by SDS-PAGE.
Clonality	Monoclonal
Isotype	IgG
Applications	WB
Target	CBL, RING finger protein 55, Proto-oncogene c-Cbl, CBL2, E3 ubiquitin-protein ligase CBL, RING-type E3 ubiquitin transferase CBL, Casitas B-lineage lymphoma proto-oncogene, Signal transduction protein CBL, RNF55
Purification	Protein A/G purified from cell culture supernatant.
Endotoxin level	Please contact with the lab for this information.
Accession	P22681

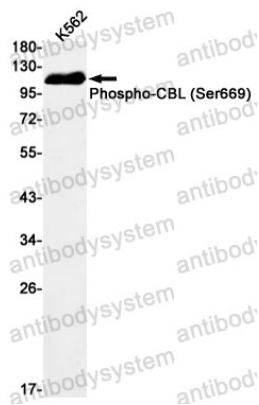
Stability and Storage

Use a manual defrost freezer and avoid repeated freeze thaw cycles. Store at 4 °C for frequent use. Store at -20 °C for twelve months from the date of receipt.

Note

For research use only.

Data Image



Western blot

Western blot analysis of Phospho-CBL (Ser669) in K562 lysates using Phospho-CBL (Ser669) antibody.