

Anti-ALAS2 Antibody (R1S06)

Summary

Catalog No.	RHD52701
Clone ID	R1S06
Host species	Rabbit
Tested applications	IP: 1:20, WB: 1:500-1:1000
Species reactivity	Human, Mouse, Rat
Form	Liquid
Storage buffer	0.01M PBS, pH 7.4, 0.05% BSA, 50% Glycerol, 0.05% Sodium azide.
Concentration	1 mg/ml
Purity	>95% by SDS-PAGE.
Clonality	Monoclonal
Isotype	IgG
Applications	IP, WB
Target	5-aminolevulinate synthase, erythroid-specific, mitochondrial, ALAS2, ASB, ALAS-E, ALASE, Delta-ALA synthase 2, Delta-aminolevulinate synthase 2, 5-aminolevulinic acid synthase 2
Purification	Protein A/G purified from cell culture supernatant.
Endotoxin level	Please contact with the lab for this information.
Accession	P22557

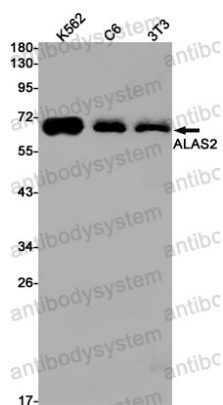
Stability and Storage

Use a manual defrost freezer and avoid repeated freeze thaw cycles. Store at 4 °C for frequent use. Store at -20 °C for twelve months from the date of receipt.

Note

For research use only.

Data Image



Western blot

Western blot analysis of ALAS2 in K562, C6, 3T3 lysates using ALAS2 antibody.