

Anti-NME2 Antibody (R1S03)

Summary

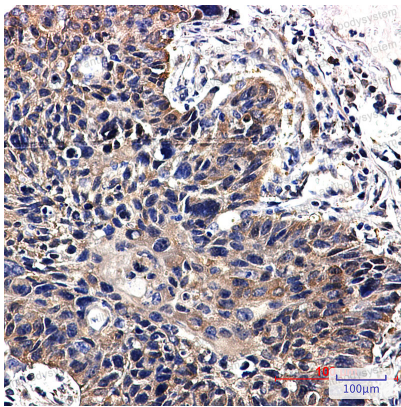
Catalog No.	RHD51601
Clone ID	R1S03
Host species	Rabbit
Tested applications	IHC: 1:50-1:100, WB: 1:500-1:1000
Species reactivity	Human, Mouse, Rat
Form	Liquid
Storage buffer	0.01M PBS, pH 7.4, 0.05% BSA, 50% Glycerol, 0.05% Sodium azide.
Concentration	1 mg/ml
Purity	>95% by SDS-PAGE.
Clonality	Monoclonal
Isotype	IgG
Applications	IHC, WB
Target	Nucleoside diphosphate kinase B, NDP kinase B, Histidine protein kinase NDKB, NME2, C-myc purine-binding transcription factor PUF, NDK B, NM23B, nm23-H2
Purification	Protein A/G purified from cell culture supernatant.
Endotoxin level	Please contact with the lab for this information.
Accession	P22392

Stability and Storage

Use a manual defrost freezer and avoid repeated freeze thaw cycles. Store at 4 °C for frequent use. Store at -20 °C for twelve months from the date of receipt.

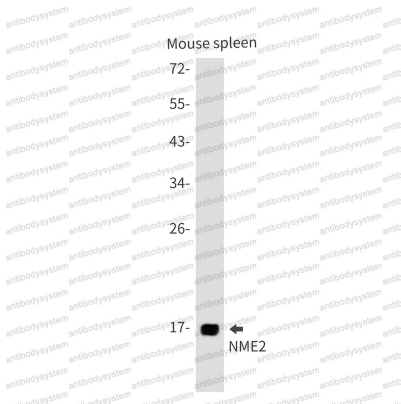
Note

For research use only.

Data Image

Immunohistochemical

Immunohistochemistry analysis of paraffin-embedded Human lung cancer using NME2 antibody. High-pressure and temperature Sodium Citrate pH 6.0 was used for antigen retrieval.



Western blot

Western blot analysis of NME2 in mouse spleen lysates using NME2 antibody.



Western blot

Western blot analysis of NME2 in U2OS, C6, Ramos lysates using NME2 antibody.