

# Anti-MMUT Antibody (R1R96)

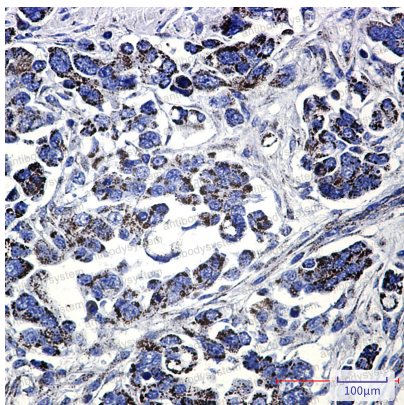
## Summary

---

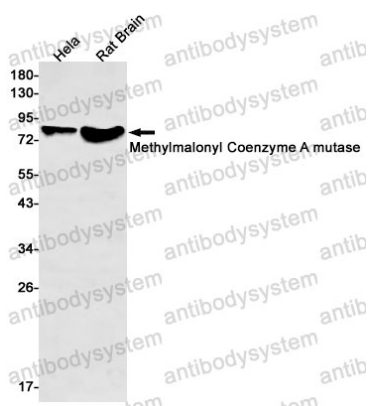
|                              |   |
|------------------------------|---|
| <b>Catalog No.</b>           | RHD49601  |
| <b>Clone ID</b>              | R1R96   |
| <b>Host species</b>          | Rabbit  |
| <b>Tested applications</b>   | IHC: 1:50-1:100, WB: 1:500-1:1000   |
| <b>Species reactivity</b>    | Human, Rat  |
| <b>Form</b>                  | Liquid  |
| <b>Storage buffer</b>        | 0.01M PBS, pH 7.4, 0.05% BSA, 50% Glycerol, 0.05% Sodium azide.   |
| <b>Concentration</b>         | 1 mg/ml   |
| <b>Purity</b>                | >95% by SDS-PAGE.   |
| <b>Clonality</b>             | Monoclonal  |
| <b>Isotype</b>               | IgG   |
| <b>Applications</b>          | IHC, WB   |
| <b>Target</b>                | MMUT, Methylmalonyl-CoA mutase, mitochondrial, MUT, Methylmalonyl-CoA isomerase, MCM  |
| <b>Purification</b>          | Protein A/G purified from cell culture supernatant.   |
| <b>Endotoxin level</b>       | Please contact with the lab for this information.   |
| <b>Accession</b>             | P22033  |
| <b>Stability and Storage</b> | Use a manual defrost freezer and avoid repeated freeze thaw cycles. Store at 4 °C for frequent use. Store at -20 °C for twelve months from the date of receipt. |

**Note**

For research use only.

**Data Image****Immunohistochemical**

Immunohistochemistry analysis of paraffin-embedded Human Cholangiocarcinoma using Methylmalonyl Coenzyme A mutase antibody. High-pressure and temperature Sodium Citrate pH 6.0 was used for antigen retrieval.

**Western blot**

Western blot analysis of Methylmalonyl Coenzyme A mutase in Hela, rat Brain lysates using Methylmalonyl Coenzyme A mutase antibody.