

# Recombinant Human ROS1 Protein, N-His

## Summary

---

|                                   |  |
|-----------------------------------|--|
| <b>Catalog No.</b>                | YHC37401   |
| <b>Alternative Names</b>          | Proto-oncogene tyrosine-protein kinase ROS, Receptor tyrosine kinase c-ros oncogene 1, c-Ros receptor tyrosine kinase, Proto-oncogene c-Ros-1, Proto-oncogene c-Ros, ROS, ROS1, MCF3 |
| <b>Form</b>                       | Lyophilized  |
| <b>Storage buffer</b>             | Lyophilized from a solution in PBS pH 7.4, 0.02% NLS, 1mM EDTA, 4% Trehalose, 1% Mannitol.   |
| <b>Purity</b>                     | >90% as determined by SDS-PAGE.  |
| <b>Applications</b>               | ELISA, Immunogen, SDS-PAGE, WB, Bioactivity testing in progress  |
| <b>Endotoxin level</b>            | Please contact with the lab for this information.  |
| <b>Expression system</b>          | E. coli  |
| <b>Accession</b>                  | P08922   |
| <b>Protein length</b>             | Leu1945-Phe2222  |
| <b>Nature</b>                     | Recombinant  |
| <b>Predicted molecular weight</b> | 34.06 kDa  |
| <b>Stability and Storage</b>      | Use a manual defrost freezer and avoid repeated freeze thaw cycles. Store at 2 to 8°C for frequent use. Store at -20 to -80°C for twelve months from the date of receipt.            |
| <b>Reconstitution</b>             | Reconstitute in sterile water for a stock solution. A copy of datasheet will be provided with the products, please refer to it for details.  |
| <b>Species</b>                    | Homo sapiens (Human)   |

## Recombinant Proteins &amp; Antibodies

**Shipping**

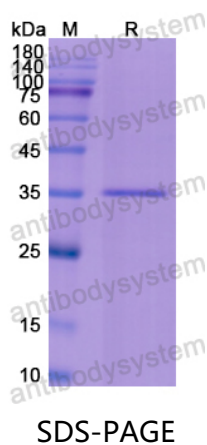
In general, proteins are provided as lyophilized powder/frozen liquid. They are shipped out with dry ice/blue ice unless customers require otherwise.

**Note**

For research use only.

## Data Image

---



SDS PAGE for recombinant Human ROS1 protein