

Anti-Human Kappa light chain Antibody (R1R39)

Summary

Catalog No.	RHD36905
Clone ID	R1R39
Host species	Rabbit
Tested applications	IF: 1:50-1:200, IHC: 1:100-1:200, WB: 1:1000-1:2000
Species reactivity	Human
Form	Liquid
Storage buffer	0.01M PBS, pH 7.4, 0.05% BSA, 50% Glycerol, 0.05% Sodium azide.
Concentration	1 mg/ml
Purity	>95% by SDS-PAGE.
Clonality	Monoclonal
Isotype	IgG
Applications	IF, IHC, WB
Target	Ig kappa chain C region EU, Ig kappa chain C region, Ig kappa chain C region ROY, Immunoglobulin kappa constant, IGKC, Ig kappa chain C region TI, Ig kappa chain C region OU, Ig kappa chain C region CUM, Ig kappa chain C region AG
Purification	Protein A/G purified from cell culture supernatant.
Endotoxin level	Please contact with the lab for this information.
Accession	P01834

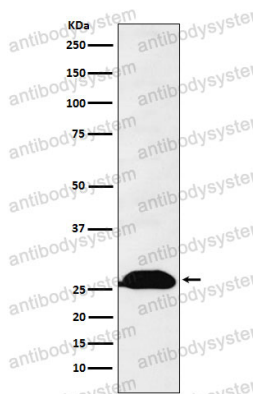
Stability and Storage

Use a manual defrost freezer and avoid repeated freeze thaw cycles. Store at 4 °C for frequent use. Store at -20 °C for twelve months from the date of receipt.

Note

For research use only.

Data Image



Western blot

Western blot analysis of Human Kappa Chain expression in Human fetal spleen lysate.