

Anti-Human Kappa light chain Antibody (R1R38)

Summary

| | |
|----------------------------|--|
| Catalog No. | RHD36904 |
| Clone ID | R1R38 |
| Host species | Rabbit |
| Tested applications | IF: 1:50-1:200, IHC: 1:100-1:200, IP: 1:20-1:50, WB: 1:1000-1:2000 |
| Species reactivity | Human |
| Form | Liquid |
| Storage buffer | 0.01M PBS, pH 7.4, 0.05% BSA, 50% Glycerol, 0.05% Sodium azide. |
| Concentration | 1 mg/ml |
| Purity | >95% by SDS-PAGE. |
| Clonality | Monoclonal |
| Isotype | IgG |
| Applications | IF, IHC, IP, WB |
| Target | Ig kappa chain C region EU, Ig kappa chain C region, Ig kappa chain C region ROY, Immunoglobulin kappa constant, IGKC, Ig kappa chain C region TI, Ig kappa chain C region OU, Ig kappa chain C region CUM, Ig kappa chain C region AG |
| Purification | Protein A/G purified from cell culture supernatant. |
| Endotoxin level | Please contact with the lab for this information. |
| Accession | P01834 |

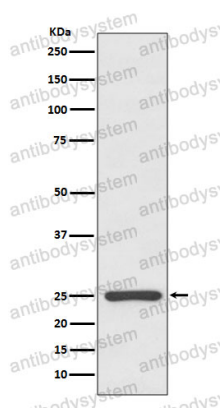
Stability and Storage

Use a manual defrost freezer and avoid repeated freeze thaw cycles. Store at 4 °C for frequent use. Store at -20 °C for twelve months from the date of receipt.

Note

For research use only.

Data Image



Western blot

Western blot analysis of Kappa light chain expression in human plasma lysate.