

Anti-ATP2B1 Antibody (R1R37)

Summary

Catalog No.	RHD36701
Clone ID	R1R37
Host species	Rabbit
Tested applications	IHC: 1:50-1:100, WB: 1:500-1:1000
Species reactivity	Human, Mouse, Rat
Form	Liquid
Storage buffer	0.01M PBS, pH 7.4, 0.05% BSA, 50% Glycerol, 0.05% Sodium azide.
Concentration	1 mg/ml
Purity	>95% by SDS-PAGE.
Clonality	Monoclonal
Isotype	IgG
Applications	IHC, WB
Target	Plasma membrane calcium ATPase isoform 1, Plasma membrane calcium pump isoform 1, Plasma membrane calcium-transporting ATPase 1, ATP2B1, PMCA1
Purification	Protein A/G purified from cell culture supernatant.
Endotoxin level	Please contact with the lab for this information.
Accession	P20020

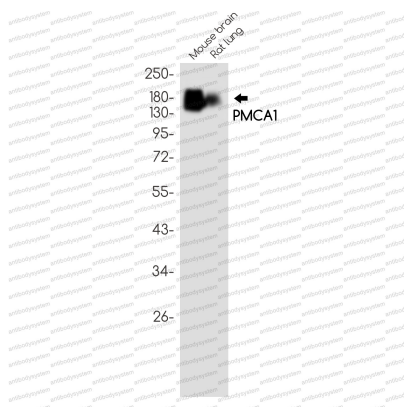
Stability and Storage

Use a manual defrost freezer and avoid repeated freeze thaw cycles. Store at 4 °C for frequent use. Store at -20 °C for twelve months from the date of receipt.

Note

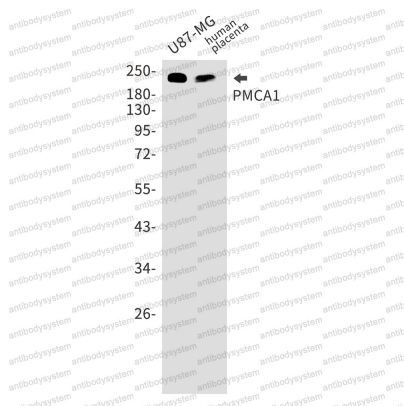
For research use only.

Data Image



Western blot

Western blot analysis of PMCA1 in mouse brain, rat lung lysates using PMCA1 antibody.



Western blot

Western blot analysis of PMCA1 in U87-MG, Human placenta lysates using PMCA1 antibody.