

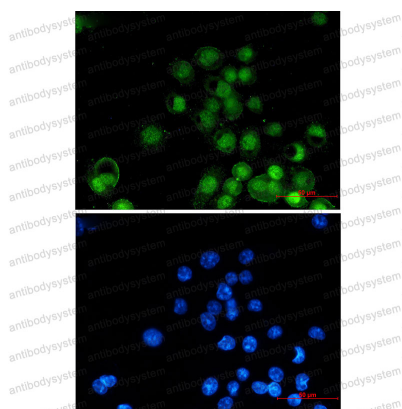
Anti-RXRA Antibody (R1R32)

Summary

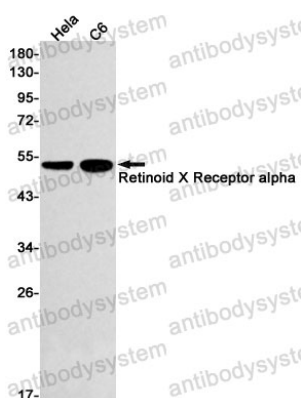
Catalog No.	RHD35401
Clone ID	R1R32
Host species	Rabbit
Tested applications	IF: 1:50-1:200, IP: 1:20, WB: 1:500-1:1000
Species reactivity	Human, Rat
Form	Liquid
Storage buffer	0.01M PBS, pH 7.4, 0.05% BSA, 50% Glycerol, 0.05% Sodium azide.
Concentration	1 mg/ml
Purity	>95% by SDS-PAGE.
Clonality	Monoclonal
Isotype	IgG
Applications	IF, IP, WB
Target	Retinoid X receptor alpha, RXRA, Nuclear receptor subfamily 2 group B member 1, NR2B1, Retinoic acid receptor RXR-alpha
Purification	Protein A/G purified from cell culture supernatant.
Endotoxin level	Please contact with the lab for this information.
Accession	P19793
Stability and Storage	Use a manual defrost freezer and avoid repeated freeze thaw cycles. Store at 4 °C for frequent use. Store at -20 °C for twelve months from the date of receipt.

Note

For research use only.

Data Image**Immunofluorescence**

Immunocytochemistry analysis of Retinoid X Receptor alpha (green) in MCF-7 using Retinoid X Receptor alpha antibody, and DAPI (blue)

**Western blot**

Western blot analysis of Retinoid X Receptor alpha in HeLa, C6 lysates using Retinoid X Receptor alpha antibody.