

Anti-SLC9A1 Antibody (R1R30)

Summary

Catalog No.	RHD35101
Clone ID	R1R30
Host species	Rabbit
Tested applications	WB: 1:1000-1:2000
Species reactivity	Human
Form	Liquid
Storage buffer	0.01M PBS, pH 7.4, 0.05% BSA, 50% Glycerol, 0.05% Sodium azide.
Concentration	1 mg/ml
Purity	>95% by SDS-PAGE.
Clonality	Monoclonal
Isotype	IgG
Applications	WB
Target	APNH, NHE-1, Sodium/hydrogen exchanger 1, Solute carrier family 9 member 1, Na(+)/H(+) exchanger 1, APNH1, Na(+)/H(+) antiporter, amiloride-sensitive, SLC9A1, NHE1
Purification	Protein A/G purified from cell culture supernatant.
Endotoxin level	Please contact with the lab for this information.
Accession	P19634

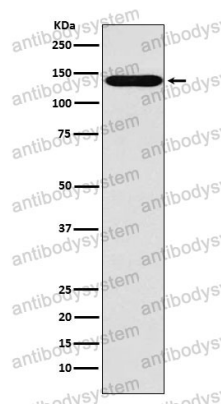
Stability and Storage

Use a manual defrost freezer and avoid repeated freeze thaw cycles. Store at 4 °C for frequent use. Store at -20 °C for twelve months from the date of receipt.

Note

For research use only.

Data Image



Western blot

Western blot analysis of Sodium / Hydrogen Exchanger 1 expression in MOLT4 cell lysate.