

Anti-TFE3 Antibody (R1R28)

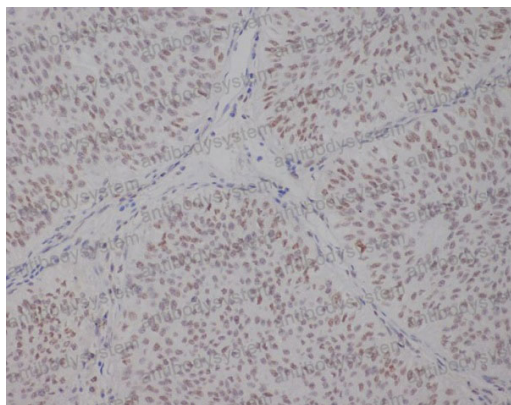
Summary

Catalog No.	RHD34702
Clone ID	R1R28
Host species	Rabbit
Tested applications	FCM: 1:20-1:100, IF: 1:50-1:200, IHC: 1:100-1:200, WB: 1:1000-1:2000
Species reactivity	Human
Form	Liquid
Storage buffer	0.01M PBS, pH 7.4, 0.05% BSA, 50% Glycerol, 0.05% Sodium azide.
Concentration	1 mg/ml
Purity	>95% by SDS-PAGE.
Clonality	Monoclonal
Isotype	IgG
Applications	FCM, IF, IHC, WB
Target	TFE3, bHLHe33, BHLHE33, Transcription factor E3, Class E basic helix-loop-helix protein 33
Purification	Protein A/G purified from cell culture supernatant.
Endotoxin level	Please contact with the lab for this information.
Accession	P19532
Stability and Storage	Use a manual defrost freezer and avoid repeated freeze thaw cycles. Store at 4 °C for frequent use. Store at -20 °C for twelve months from the date of receipt.

Note

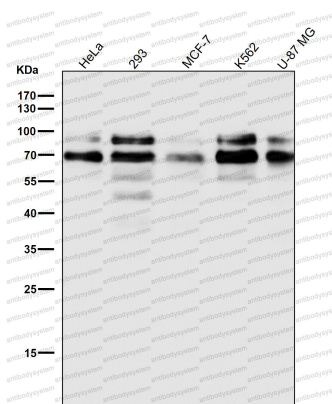
For research use only.

Data Image



Immunohistochemical

Immunohistochemical analysis of paraffin-embedded human bladder, using TFE3 Antibody.



Western blot

All lanes use the Antibody at 1:1K dilution for 1 hour at room temperature.