

Anti-GPX2 Antibody (R1Q83)

Summary

Catalog No.	RHD28901
Clone ID	R1Q83
Host species	Rabbit
Tested applications	IHC: 1:100-1:200, WB: 1:1000-1:2000
Species reactivity	Human
Form	Liquid
Storage buffer	0.01M PBS, pH 7.4, 0.05% BSA, 50% Glycerol, 0.05% Sodium azide.
Concentration	1 mg/ml
Purity	>95% by SDS-PAGE.
Clonality	Monoclonal
Isotype	IgG
Applications	IHC, WB
Target	GPX2, GPx-2, Glutathione peroxidase 2, GPx-GI, GSHPx-2, Glutathione peroxidase-related protein 2, GPRP-2, Gastrointestinal glutathione peroxidase, GSHPx-GI, Glutathione peroxidase-gastrointestinal
Purification	Protein A/G purified from cell culture supernatant.
Endotoxin level	Please contact with the lab for this information.
Accession	P18283

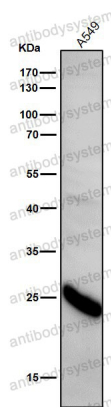
Stability and Storage

Use a manual defrost freezer and avoid repeated freeze thaw cycles. Store at 4 °C for frequent use. Store at -20 °C for twelve months from the date of receipt.

Note

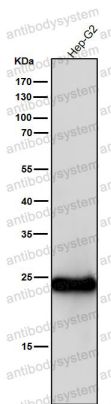
For research use only.

Data Image



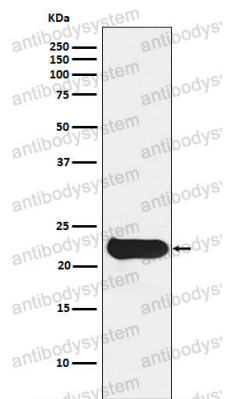
Western blot

All lanes use the Antibody at 1:1k dilution for 1 hour at room temperature.



Western blot

All lanes use the Antibody at 1:1k dilution for 1 hour at room temperature.



Western blot

Western blot analysis of Glutathione Peroxidase 2 expression in Human stomach lysate.