

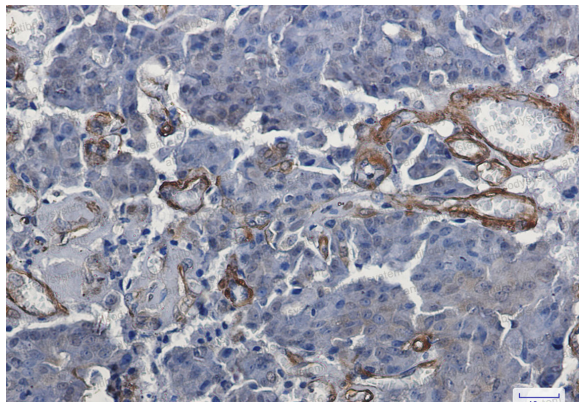
# Anti-VCL Antibody (R1Q82)

## Summary

---

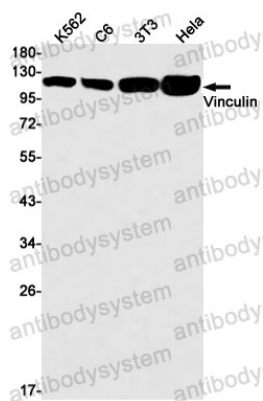
|                              |   |
|------------------------------|---|
| <b>Catalog No.</b>           | RHD28803  |
| <b>Clone ID</b>              | R1Q82   |
| <b>Host species</b>          | Rabbit  |
| <b>Tested applications</b>   | IHC: 1:50-1:100, WB: 1:500-1:1000   |
| <b>Species reactivity</b>    | Human, Mouse, Rat   |
| <b>Form</b>                  | Liquid  |
| <b>Storage buffer</b>        | 0.01M PBS, pH 7.4, 0.05% BSA, 50% Glycerol, 0.05% Sodium azide.   |
| <b>Concentration</b>         | 1 mg/ml   |
| <b>Purity</b>                | >95% by SDS-PAGE.   |
| <b>Clonality</b>             | Monoclonal  |
| <b>Isotype</b>               | IgG   |
| <b>Applications</b>          | IHC, WB   |
| <b>Target</b>                | MV, Metavinculin, Vinculin, VCL   |
| <b>Purification</b>          | Protein A/G purified from cell culture supernatant.   |
| <b>Endotoxin level</b>       | Please contact with the lab for this information.   |
| <b>Accession</b>             | P18206  |
| <b>Stability and Storage</b> | Use a manual defrost freezer and avoid repeated freeze thaw cycles. Store at 4 °C for frequent use. Store at -20 °C for twelve months from the date of receipt. |
| <b>Note</b>                  | For research use only.  |

## Data Image



Immunohistochemical

Immunohistochemistry analysis of paraffin-embedded Human breast cancer using Vinculin antibody. High-pressure and temperature Sodium Citrate pH 6.0 was used for antigen retrieval.



Western blot

Western blot analysis of Vinculin in K562, C6, 3T3, HeLa lysates using Vinculin antibody.