

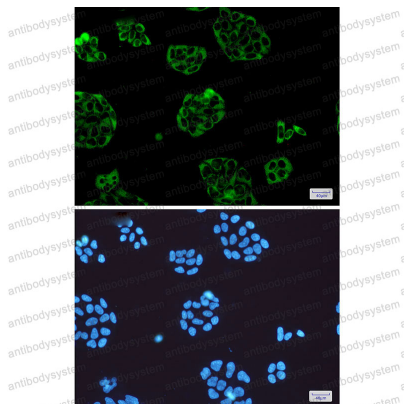
# Anti-VCL Antibody (R1Q81)

## Summary

---

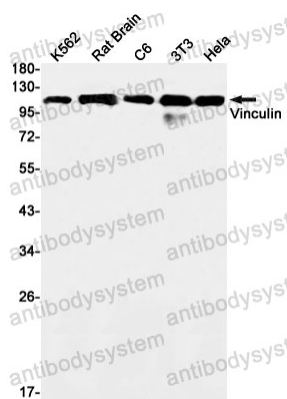
<b>Catalog No.</b>	RHD28802
<b>Clone ID</b>	R1Q81
<b>Host species</b>	Rabbit
<b>Tested applications</b>	IF: 1:50-1:200, IP: 1:20, WB: 1:500-1:1000
<b>Species reactivity</b>	Human, Mouse, Rat
<b>Form</b>	Liquid
<b>Storage buffer</b>	0.01M PBS, pH 7.4, 0.05% BSA, 50% Glycerol, 0.05% Sodium azide.
<b>Concentration</b>	1 mg/ml
<b>Purity</b>	>95% by SDS-PAGE.
<b>Clonality</b>	Monoclonal
<b>Isotype</b>	IgG
<b>Applications</b>	IF, IP, WB
<b>Target</b>	MV, Metavinculin, Vinculin, VCL
<b>Purification</b>	Protein A/G purified from cell culture supernatant.
<b>Endotoxin level</b>	Please contact with the lab for this information.
<b>Accession</b>	P18206
<b>Stability and Storage</b>	Use a manual defrost freezer and avoid repeated freeze thaw cycles. Store at 4 °C for frequent use. Store at -20 °C for twelve months from the date of receipt.
<b>Note</b>	For research use only.

## Data Image



Immunofluorescence

Immunocytochemistry analysis of Vinculin(green) in Hela using Vinculin antibody, and DAPI(blue)



Western blot

Western blot analysis of Vinculin in K562, rat Brain, C6, 3T3, Hela lysates using Vinculin antibody.