

# Anti-EGR1 Antibody (R1Q80)

## Summary

---

<b>Catalog No.</b>	RHD28701
<b>Clone ID</b>	R1Q80
<b>Host species</b>	Rabbit
<b>Tested applications</b>	IF: 1:50-1:200, IHC: 1:100-1:200, WB: 1:1000-1:5000
<b>Species reactivity</b>	Human
<b>Form</b>	Liquid
<b>Storage buffer</b>	0.01M PBS, pH 7.4, 0.05% BSA, 50% Glycerol, 0.05% Sodium azide.
<b>Concentration</b>	1 mg/ml
<b>Purity</b>	>95% by SDS-PAGE.
<b>Clonality</b>	Monoclonal
<b>Isotype</b>	IgG
<b>Applications</b>	IF, IHC, WB
<b>Target</b>	Zinc finger protein Krox-24, EGR-1, Nerve growth factor-induced protein A, Early growth response protein 1, NGFI-A, KROX24, Transcription factor ETR103, ZNF225, Transcription factor Zif268, Zinc finger protein 225, EGR1, AT225
<b>Purification</b>	Protein A/G purified from cell culture supernatant.
<b>Endotoxin level</b>	Please contact with the lab for this information.
<b>Accession</b>	P18146

**Stability and Storage**

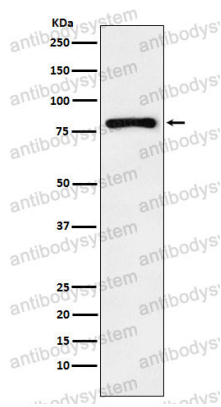
Use a manual defrost freezer and avoid repeated freeze thaw cycles. Store at 4 °C for frequent use. Store at -20 °C for twelve months from the date of receipt.

**Note**

For research use only.

**Data Image**

---



Western blot

Western blot analysis of Egr1 expression in 293T cell lysate treated with 20% FBS.