

Anti-ERCC2 Antibody (R1Q78)

Summary

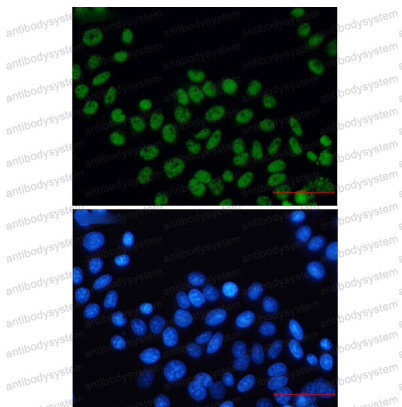
Catalog No.	RHD28001
Clone ID	R1Q78
Host species	Rabbit
Tested applications	IF: 1:50-1:200, WB: 1:500-1:1000
Species reactivity	Human
Form	Liquid
Storage buffer	0.01M PBS, pH 7.4, 0.05% BSA, 50% Glycerol, 0.05% Sodium azide.
Concentration	1 mg/ml
Purity	>95% by SDS-PAGE.
Clonality	Monoclonal
Isotype	IgG
Applications	IF, WB
Target	TFIIH basal transcription factor complex 80 kDa subunit, DNA repair protein complementing XP-D cells, General transcription and DNA repair factor IIH helicase subunit XPD, XPD, ERCC2, TFIIH p80, CXPB, BTF2 p80, TFIIH 80 kDa subunit, DNA excision repair protein ERCC-2, TFIIH subunit XPD, XPB, Basic transcription factor 2 80 kDa subunit, Xeroderma pigmentosum group D-complementing protein
Purification	Protein A/G purified from cell culture supernatant.
Endotoxin level	Please contact with the lab for this information.
Accession	P18074

Stability and Storage

Use a manual defrost freezer and avoid repeated freeze thaw cycles. Store at 4 °C for frequent use. Store at -20 °C for twelve months from the date of receipt.

Note

For research use only.

Data Image

Immunofluorescence

Immunocytochemistry analysis of XPD (green) in Hela using XPD antibody, and DAPI (blue)



Western blot

Western blot analysis of XPD in Jurkat, Hela lysates using XPD antibody.