

Anti-TCP1/CCTA Antibody (R1Q70)

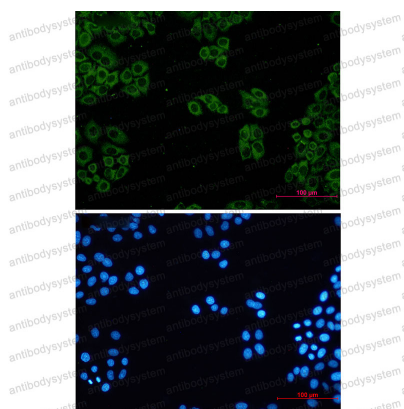
Summary

Catalog No.	RHD27601
Clone ID	R1Q70
Host species	Rabbit
Tested applications	IF: 1:50-1:200, IHC: 1:50-1:100, IP: 1:20, WB: 1:500-1:1000
Species reactivity	Human, Hamster
Form	Liquid
Storage buffer	0.01M PBS, pH 7.4, 0.05% BSA, 50% Glycerol, 0.05% Sodium azide.
Concentration	1 mg/ml
Purity	>95% by SDS-PAGE.
Clonality	Monoclonal
Isotype	IgG
Applications	IF, IHC, IP, WB
Target	CCT1, T-complex protein 1 subunit alpha, TCP-1-alpha, CCTA, CCT-alpha, TCP1
Purification	Protein A/G purified from cell culture supernatant.
Endotoxin level	Please contact with the lab for this information.
Accession	P17987
Stability and Storage	Use a manual defrost freezer and avoid repeated freeze thaw cycles. Store at 4 °C for frequent use. Store at -20 °C for twelve months from the date of receipt.

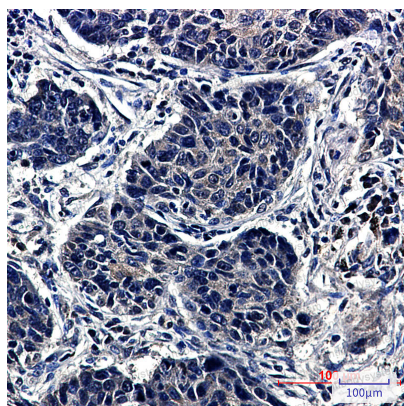
Note

For research use only.

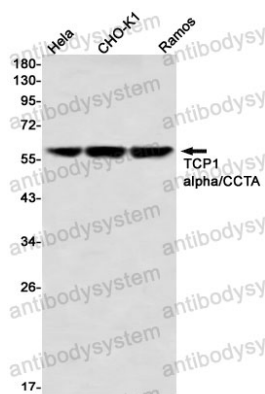
Data Image

**Immunofluorescence**

Immunocytochemistry analysis of TCP 1 alpha (green) in Hela using TCP 1 alpha antibody, and DAPI(blue).

**Immunohistochemical**

Immunohistochemistry analysis of paraffin-embedded Human lung cancer tissue using TCP1 alpha/CCTA antibody. High-pressure and temperature Sodium Citrate pH 6.0 was used for antigen retrieval.



Western blot

Western blot analysis of TCP1 alpha/CCTA in Hela, CHO-K1, Ramos lysates using TCP1 alpha/CCTA antibody.