

# Anti-XBP1 Antibody (R1Q58)

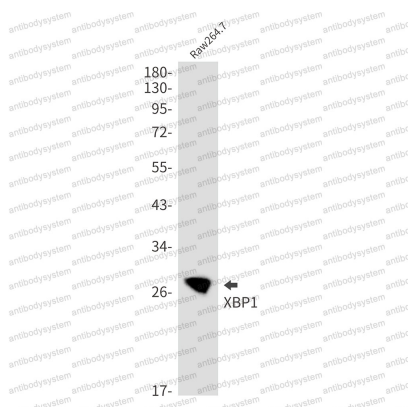
## Summary

---

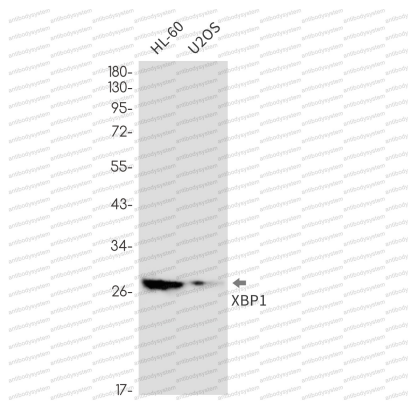
<b>Catalog No.</b>	RHD26801
<b>Clone ID</b>	R1Q58
<b>Host species</b>	Rabbit
<b>Tested applications</b>	IP: 1:20, WB: 1:500-1:1000
<b>Species reactivity</b>	Human, Mouse
<b>Form</b>	Liquid
<b>Storage buffer</b>	0.01M PBS, pH 7.4, 0.05% BSA, 50% Glycerol, 0.05% Sodium azide.
<b>Concentration</b>	1 mg/ml
<b>Purity</b>	>95% by SDS-PAGE.
<b>Clonality</b>	Monoclonal
<b>Isotype</b>	IgG
<b>Applications</b>	IP, WB
<b>Target</b>	TREB-5, XBP2, X-box-binding protein 1, Tax-responsive element-binding protein 5, TREB5, XBP1, XBP-1
<b>Purification</b>	Protein A/G purified from cell culture supernatant.
<b>Endotoxin level</b>	Please contact with the lab for this information.
<b>Accession</b>	P17861
<b>Stability and Storage</b>	Use a manual defrost freezer and avoid repeated freeze thaw cycles. Store at 4 °C for frequent use. Store at -20 °C for twelve months from the date of receipt.

**Note**

For research use only.

**Data Image****Western blot**

Western blot analysis of XBP1 in Raw264.7 lysates using XBP1 antibody.

**Western blot**

Western blot analysis of XBP1 in HL-60, U2OS lysates using XBP1 antibody.