

Anti-TYRP1 Antibody (R1Q50)

Summary

Catalog No.	RHD25202
Clone ID	R1Q50
Host species	Rabbit
Tested applications	IHC: 1:100-1:200, IP: 1:20-1:50, WB: 1:1000-1:2000
Species reactivity	Human
Form	Liquid
Storage buffer	0.01M PBS, pH 7.4, 0.05% BSA, 50% Glycerol, 0.05% Sodium azide.
Concentration	1 mg/ml
Purity	>95% by SDS-PAGE.
Clonality	Monoclonal
Isotype	IgG
Applications	IHC, IP, WB
Target	5,6-dihydroxyindole-2-carboxylic acid oxidase, Glycoprotein 75, CAS2, TYRP1, TRP-1, TYRRP, TRP1, Catalase B, TYRP, Melanoma antigen gp75, TRP, DHICA oxidase, Tyrosinase-related protein 1
Purification	Protein A/G purified from cell culture supernatant.
Endotoxin level	Please contact with the lab for this information.
Accession	P17643

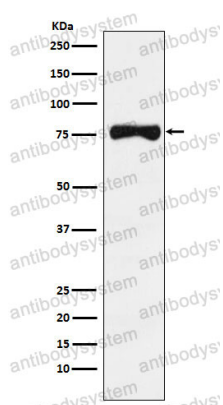
Stability and Storage

Use a manual defrost freezer and avoid repeated freeze thaw cycles. Store at 4 °C for frequent use. Store at -20 °C for twelve months from the date of receipt.

Note

For research use only.

Data Image



Western blot

Western blot analysis of TRP1 expression in Human melanoma lysate.