

Anti-NPR3 Antibody (R1Q40)

Summary

Catalog No.	RHD23601
Clone ID	R1Q40
Host species	Rabbit
Tested applications	FCM: 1:20-1:100, WB: 1:1000-1:2000
Species reactivity	Human, Mouse, Rat
Form	Liquid
Storage buffer	0.01M PBS, pH 7.4, 0.05% BSA, 50% Glycerol, 0.05% Sodium azide.
Concentration	1 mg/ml
Purity	>95% by SDS-PAGE.
Clonality	Monoclonal
Isotype	IgG
Applications	FCM, WB
Target	ANPR-C, ANP-C, NPR-C, Atrial natriuretic peptide receptor 3, C5orf23, NPR3, NPRC, Atrial natriuretic peptide receptor type C, ANPRC, Atrial natriuretic peptide clearance receptor
Purification	Protein A/G purified from cell culture supernatant.
Endotoxin level	Please contact with the lab for this information.
Accession	P17342

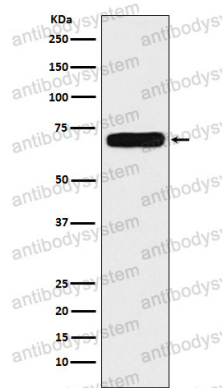
Stability and Storage

Use a manual defrost freezer and avoid repeated freeze thaw cycles. Store at 4 °C for frequent use. Store at -20 °C for twelve months from the date of receipt.

Note

For research use only.

Data Image



Western blot

Western blot analysis of Natriuretic Peptide Receptor C expression in HeLa cell lysate.