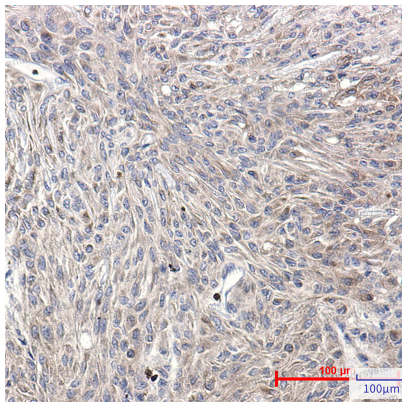


Anti-Phospho-PRKCA (Ser660) Antibody (R1Q35)

Summary

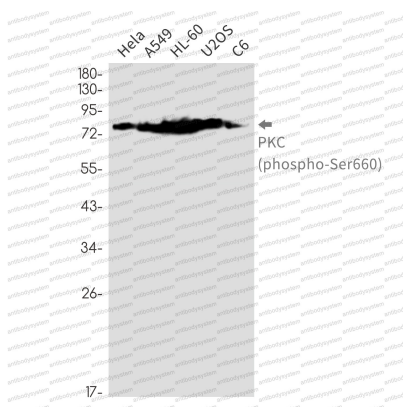
Catalog No.	RHD23207
Clone ID	R1Q35
Host species	Rabbit
Tested applications	IHC: 1:50-1:100, WB: 1:500-1:1000
Species reactivity	Human, Rat
Form	Liquid
Storage buffer	0.01M PBS, pH 7.4, 0.05% BSA, 50% Glycerol, 0.05% Sodium azide.
Concentration	1 mg/ml
Purity	>95% by SDS-PAGE.
Clonality	Monoclonal
Isotype	IgG
Applications	IHC, WB
Target	PKCA, PRKCA, PKC-A, Protein kinase C alpha type, PRKACA, PKC-alpha
Purification	Protein A/G purified from cell culture supernatant.
Endotoxin level	Please contact with the lab for this information.
Accession	P17252, P05771, Q05655, Q02156, P24723, Q04759
Stability and Storage	Use a manual defrost freezer and avoid repeated freeze thaw cycles. Store at 4 °C for frequent use. Store at -20 °C for twelve months from the date of receipt.
Note	For research use only.

Data Image



Immunohistochemical

Immunohistochemistry analysis of paraffin-embedded Human Brain using PKC (Phospho-Ser660) antibody. High-pressure and temperature Sodium Citrate pH 6.0 was used for antigen retrieval.



Western blot

Western blot analysis of PKC (Phospho-Ser660) in HeLa, A549, HL-60, U2OS, C6 lysates using Phospho-PKC (Ser660) antibody.