

Anti-Phospho-PRKCA/PKC alpha (Ser657) Antibody (R1Q33)

Summary

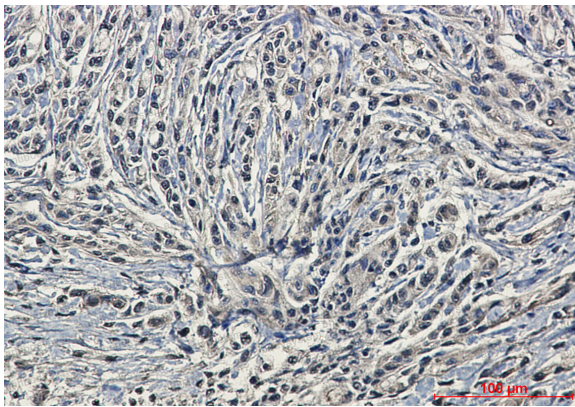
| | |
|----------------------------|--|
| Catalog No. | RHD23202 |
| Clone ID | R1Q33 |
| Host species | Rabbit |
| Tested applications | IHC: 1:50-1:100, WB: 1:500-1:1000 |
| Species reactivity | Human, Mouse, Rat |
| Form | Liquid |
| Storage buffer | 0.01M PBS, pH 7.4, 0.05% BSA, 50% Glycerol, 0.05% Sodium azide. |
| Concentration | 1 mg/ml |
| Purity | >95% by SDS-PAGE. |
| Clonality | Monoclonal |
| Isotype | IgG |
| Applications | IHC, WB |
| Target | PKCA, PRKCA, PKC-A, Protein kinase C alpha type, PRKACA, PKC-alpha |
| Purification | Protein A/G purified from cell culture supernatant. |
| Endotoxin level | Please contact with the lab for this information. |
| Accession | P17252 |

Stability and Storage

Use a manual defrost freezer and avoid repeated freeze thaw cycles. Store at 4 °C for frequent use. Store at -20 °C for twelve months from the date of receipt.

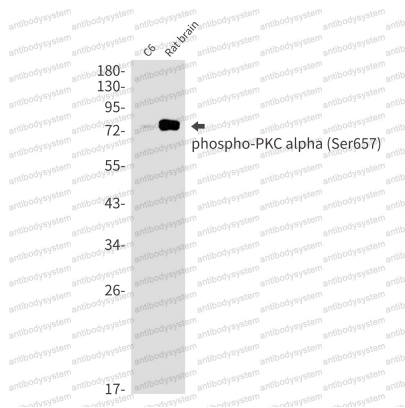
Note

For research use only.

Data Image

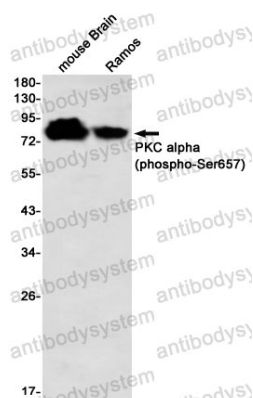
Immunohistochemical

Immunohistochemistry analysis of paraffin-embedded Human brain using Phospho-PKC alpha (Ser657) antibody. High-pressure and temperature Sodium Citrate pH 6.0 was used for antigen retrieval.



Western blot

Western blot analysis of Phospho-PKC alpha (Ser657) in C6, rat brain lysates using Phospho-PKC alpha (Ser657) antibody.



Western blot

Western blot analysis of PKC alpha (Phospho-Ser657) in mouse Brain, Ramos lysates using PKC alpha (Phospho-Ser657) antibody.