

Anti-GOT1 Antibody (R1Q28)

Summary

Catalog No.	RHD22901
Clone ID	R1Q28
Host species	Rabbit
Tested applications	IF: 1:50-1:200, IHC: 1:50-1:100, WB: 1:500-1:1000
Species reactivity	Human, Mouse, Rat
Form	Liquid
Storage buffer	0.01M PBS, pH 7.4, 0.05% BSA, 50% Glycerol, 0.05% Sodium azide.
Concentration	1 mg/ml
Purity	>95% by SDS-PAGE.
Clonality	Monoclonal
Isotype	IgG
Applications	IF, IHC, WB
Target	GOT1, Cysteine aminotransferase, cytoplasmic, Aspartate aminotransferase, cytoplasmic, Glutamate oxaloacetate transaminase 1, Cysteine transaminase, cytoplasmic, Transaminase A, cAspAT, cCAT
Purification	Protein A/G purified from cell culture supernatant.
Endotoxin level	Please contact with the lab for this information.
Accession	P17174

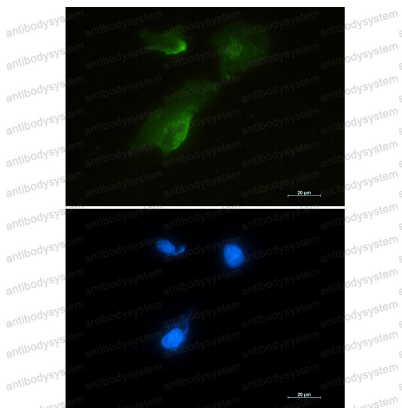
Stability and Storage

Use a manual defrost freezer and avoid repeated freeze thaw cycles. Store at 4 °C for frequent use. Store at -20 °C for twelve months from the date of receipt.

Note

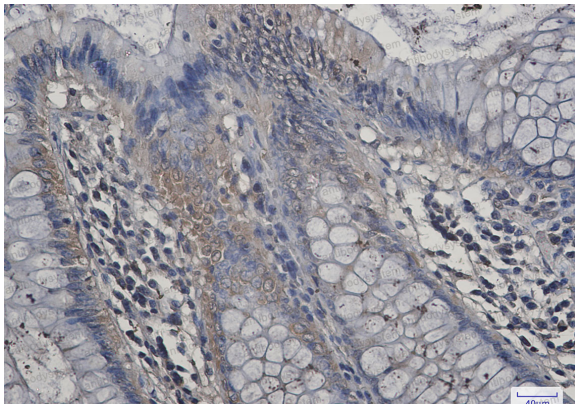
For research use only.

Data Image



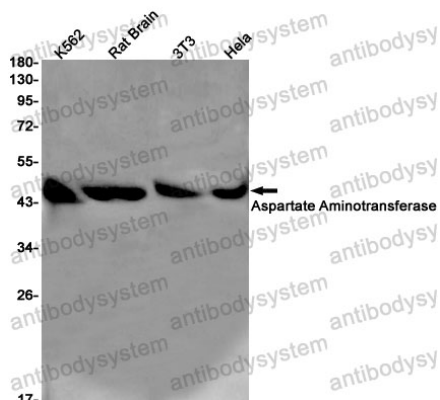
Immunofluorescence

Immunocytochemistry analysis of Aspartate Aminotransferase (green) in U87-MG using Aspartate Aminotransferase antibody, and DAPI (blue).



Immunohistochemical

Immunohistochemistry analysis of paraffin-embedded Human colon cancer tissue using Aspartate Aminotransferase antibody. High-pressure and temperature Sodium Citrate pH 6.0 was used for antigen retrieval.



Western blot

Western blot analysis of Aspartate
Aminotransferase in K562, rat Brain, 3T3, HeLa
lysates using Aspartate Aminotransferase antibody.