

Anti-HMGA1 Antibody (R1Q26)

Summary

Catalog No.	RHD22501
Clone ID	R1Q26
Host species	Rabbit
Tested applications	IF: 1:50-1:200, IHC: 1:50-1:100, IP: 1:20, WB: 1:500-1:1000
Species reactivity	Human, Rat
Form	Liquid
Storage buffer	0.01M PBS, pH 7.4, 0.05% BSA, 50% Glycerol, 0.05% Sodium azide.
Concentration	1 mg/ml
Purity	>95% by SDS-PAGE.
Clonality	Monoclonal
Isotype	IgG
Applications	IF, IHC, IP, WB
Target	HMGA1, High mobility group protein HMG-I/HMG-Y, High mobility group protein A1, HMGIY, High mobility group protein R, HMG-I(Y), High mobility group AT-hook protein 1
Purification	Protein A/G purified from cell culture supernatant.
Endotoxin level	Please contact with the lab for this information.
Accession	P17096

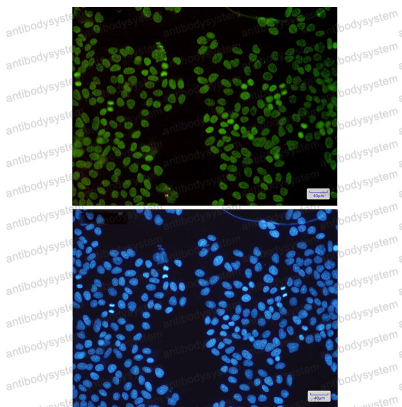
Stability and Storage

Use a manual defrost freezer and avoid repeated freeze thaw cycles. Store at 4 °C for frequent use. Store at -20 °C for twelve months from the date of receipt.

Note

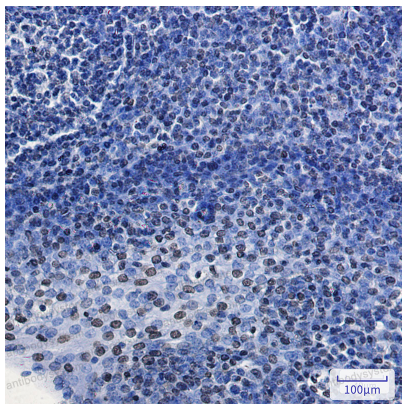
For research use only.

Data Image



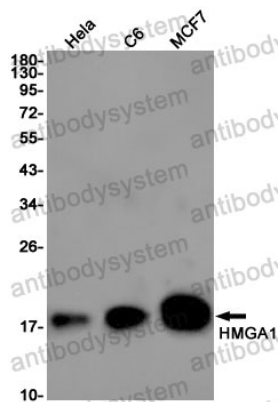
Immunofluorescence

Immunocytochemistry analysis of HMGA1(green) in Hela using HMGA1 antibody, and DAPI(blue)



Immunohistochemical

Immunohistochemistry analysis of paraffin-embedded Human tonsil using HMGA1 antibody. High-pressure and temperature Sodium Citrate pH 6.0 was used for antigen retrieval.



Western blot

Western blot analysis of HMGA1 in HeLa, C6, MCF-7 lysates using HMGA1 antibody.