

# Anti-ATP2A2 Antibody (R1Q21)

## Summary

---

<b>Catalog No.</b>	RHD18801
<b>Clone ID</b>	R1Q21
<b>Host species</b>	Rabbit
<b>Tested applications</b>	IF: 1:50-1:200, IHC: 1:50-1:100, WB: 1:500-1:1000
<b>Species reactivity</b>	Human, Rat
<b>Form</b>	Liquid
<b>Storage buffer</b>	0.01M PBS, pH 7.4, 0.05% BSA, 50% Glycerol, 0.05% Sodium azide.
<b>Concentration</b>	1 mg/ml
<b>Purity</b>	>95% by SDS-PAGE.
<b>Clonality</b>	Monoclonal
<b>Isotype</b>	IgG
<b>Applications</b>	IF, IHC, WB
<b>Target</b>	SERCA2, Calcium pump 2, Sarcoplasmic/endoplasmic reticulum calcium ATPase 2, ATP2B, SR Ca(2+)-ATPase 2, Calcium-transporting ATPase sarcoplasmic reticulum type, slow twitch skeletal muscle isoform, ATP2A2, Endoplasmic reticulum class 1/2 Ca(2+) ATPase
<b>Purification</b>	Protein A/G purified from cell culture supernatant.
<b>Endotoxin level</b>	Please contact with the lab for this information.
<b>Accession</b>	P16615

**Stability and Storage**

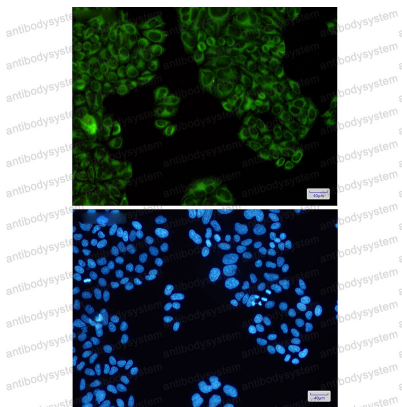
Use a manual defrost freezer and avoid repeated freeze thaw cycles. Store at 4 °C for frequent use. Store at -20 °C for twelve months from the date of receipt.

**Note**

For research use only.

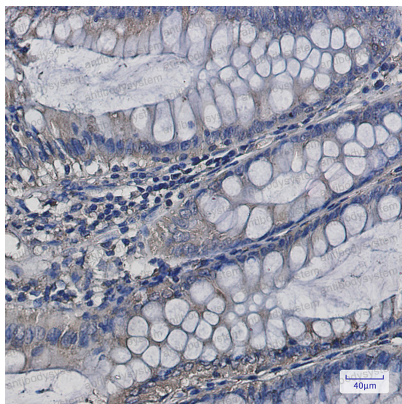
**Data Image**

---



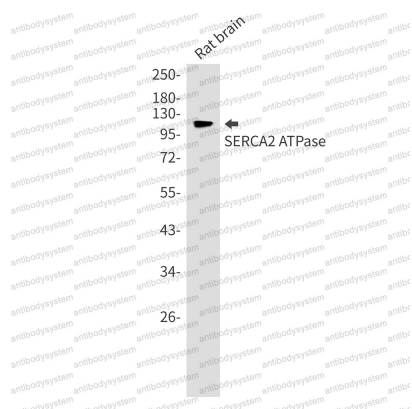
Immunofluorescence

Immunocytochemistry analysis of SERCA2 ATPase(green) in HeLa using SERCA2 ATPase antibody, and DAPI(blue)



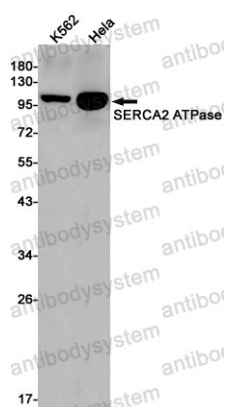
Immunohistochemical

Immunohistochemistry analysis of paraffin-embedded Human colon cancer using SERCA2 ATPase antibody. High-pressure and temperature Sodium Citrate pH 6.0 was used for antigen retrieval.



Western blot

Western blot analysis of SERCA2 ATPase in rat brain lysates using SERCA2 ATPase antibody.



Western blot

Western blot analysis of SERCA2 ATPase in K562, Hela lysates using SERCA2 ATPase antibody.