

Anti-NME1 Antibody (R1P81)

Summary

Catalog No.	RHD12001
Clone ID	R1P81
Host species	Rabbit
Tested applications	WB: 1:500-1:1000
Species reactivity	Human
Form	Liquid
Storage buffer	0.01M PBS, pH 7.4, 0.05% BSA, 50% Glycerol, 0.05% Sodium azide.
Concentration	1 mg/ml
Purity	>95% by SDS-PAGE.
Clonality	Monoclonal
Isotype	IgG
Applications	WB
Target	NDPKA, NME1, NDP kinase A, Nucleoside diphosphate kinase A, Granzyme A-activated DNase, NM23, Metastasis inhibition factor nm23, GAAD, Tumor metastatic process-associated protein, NDK A, NM23-H1
Purification	Protein A/G purified from cell culture supernatant.
Endotoxin level	Please contact with the lab for this information.
Accession	P15531

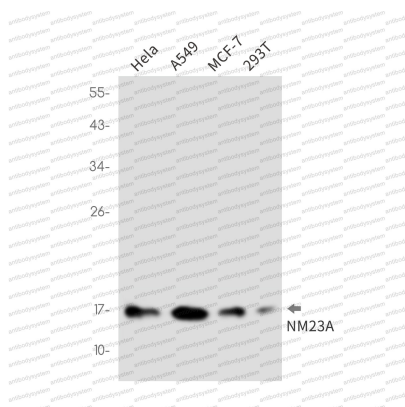
Stability and Storage

Use a manual defrost freezer and avoid repeated freeze thaw cycles. Store at 4 °C for frequent use. Store at -20 °C for twelve months from the date of receipt.

Note

For research use only.

Data Image



Western blot

Western blot analysis of NM23A in HeLa, A549, MCF-7, 293T lysates using NM23A antibody.