

Recombinant Human CD228/MELTF Protein, C-His

Summary

Catalog No.	EHC34301
Alternative Names	CD228, Melanotransferrin, Melanoma-associated antigen p97, MAP97, MFI2, MELTF
Form	Lyophilized
Storage buffer	Lyophilized from a solution in PBS pH 7.4, 1mM EDTA, 4% Trehalose, 1% Mannitol.
Purity	>90% as determined by SDS-PAGE.
Applications	ELISA, Immunogen, SDS-PAGE, WB, Bioactivity testing in progress
Endotoxin level	Please contact with the lab for this information.
Expression system	Mammalian Cells
Accession	P08582
Protein length	Met1-Leu738
Nature	Recombinant
Predicted molecular weight	79.17 kDa
Stability and Storage	Use a manual defrost freezer and avoid repeated freeze thaw cycles. Store at 2 to 8°C for frequent use. Store at -20 to -80°C for twelve months from the date of receipt.
Reconstitution	Reconstitute in sterile water for a stock solution. A copy of datasheet will be provided with the products, please refer to it for details.
Species	Homo sapiens (Human)

Shipping

In general, proteins are provided as lyophilized powder/frozen liquid. They are shipped out with dry ice/blue ice unless customers require otherwise.

Note

For research use only.

Data Image

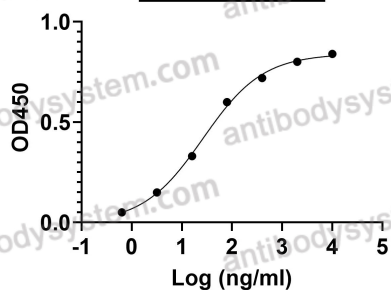


SDS-PAGE

SDS PAGE for recombinant Human CD228 / MELTF

Anti-Human CD228/MELTF (Iv0104)
binds with CD228

EC50	26.49
------	-------

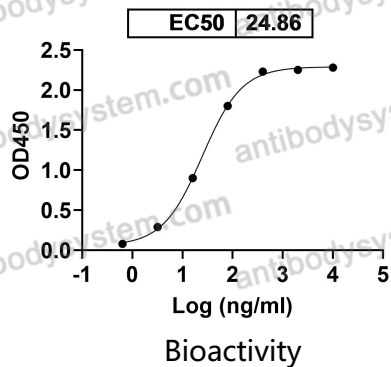


Bioactivity

Detects Human CD228/MELTF in indirect ELISAs.



Anti-Human CD228/MELTF Antibody (sc57.43)
binds with CD228



Detects Human CD228/MELTF Antibody (sc57.43) in indirect ELISAs.