

Anti-ATF2 Antibody (R1P73)

Summary

Catalog No.	RMD10501
Clone ID	R1P73
Host species	Rabbit
Tested applications	WB: 1:500-1:1000
Species reactivity	Human, Mouse, Rat
Form	Liquid
Storage buffer	0.01M PBS, pH 7.4, 0.05% BSA, 50% Glycerol, 0.05% Sodium azide.
Concentration	1 mg/ml
Purity	>95% by SDS-PAGE.
Clonality	Monoclonal
Isotype	IgG
Applications	WB
Target	ATF2, cAMP response element-binding protein CRE-BP1, CREB2, CREBP1, cAMP-responsive element-binding protein 2, cAMP-dependent transcription factor ATF-2, Activating transcription factor 2, HB16, Cyclic AMP-dependent transcription factor ATF-2, CREB-2, Cyclic AMP-responsive element-binding protein 2
Purification	Protein A/G purified from cell culture supernatant.
Endotoxin level	Please contact with the lab for this information.
Accession	P16951

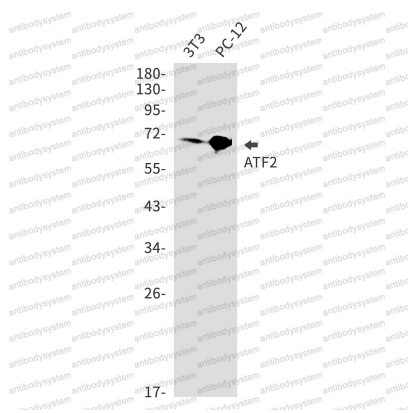
Stability and Storage

Use a manual defrost freezer and avoid repeated freeze thaw cycles. Store at 4 °C for frequent use. Store at -20 °C for twelve months from the date of receipt.

Note

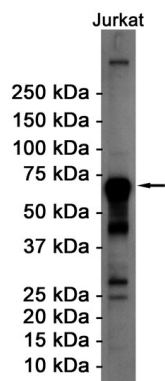
For research use only.

Data Image



Western blot

Western blot analysis of ATF2 in 3T3, PC-12 lysates using ATF2 antibody.



Western blot

Western blot analysis of ATF2 in Jurkat lysates using ATF2 antibody.