

Anti-ATF2 Antibody (R1P72)

Summary

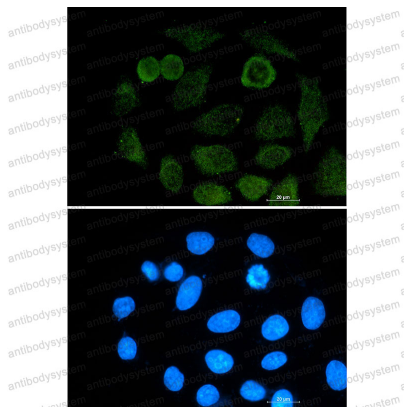
Catalog No.	RHD10501
Clone ID	R1P72
Host species	Rabbit
Tested applications	IF: 1:50-1:200, IP: 1:20, WB: 1:500-1:1000
Species reactivity	Human
Form	Liquid
Storage buffer	0.01M PBS, pH 7.4, 0.05% BSA, 50% Glycerol, 0.05% Sodium azide.
Concentration	1 mg/ml
Purity	>95% by SDS-PAGE.
Clonality	Monoclonal
Isotype	IgG
Applications	IF, IP, WB
Target	ATF2, cAMP response element-binding protein CRE-BP1, CREB2, CREBP1, cAMP-responsive element-binding protein 2, cAMP-dependent transcription factor ATF-2, Activating transcription factor 2, HB16, Cyclic AMP-dependent transcription factor ATF-2, CREB-2, Cyclic AMP-responsive element-binding protein 2
Purification	Protein A/G purified from cell culture supernatant.
Endotoxin level	Please contact with the lab for this information.
Accession	P15336

Stability and Storage

Use a manual defrost freezer and avoid repeated freeze thaw cycles. Store at 4 °C for frequent use. Store at -20 °C for twelve months from the date of receipt.

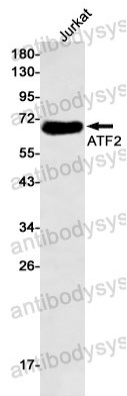
Note

For research use only.

Data Image

Immunofluorescence

Immunocytochemistry analysis of ATF2 (green) in A549 using ATF2 antibody, and DAPI (blue).



Western blot

Western blot analysis of ATF2 in Jurkat lysates using ATF2 antibody.