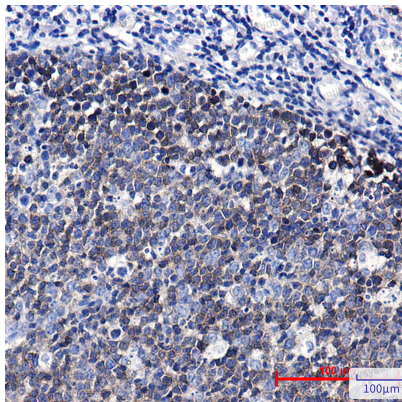


Anti-EZR Antibody (R1P69)

Summary

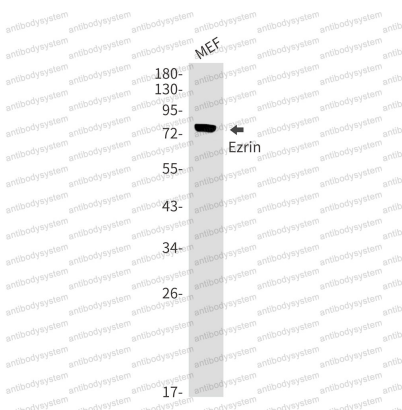
Catalog No.	RHD10203
Clone ID	R1P69
Host species	Rabbit
Tested applications	IHC: 1:50-1:100, IP: 1:20, WB: 1:500-1:1000
Species reactivity	Human, Mouse, Rat
Form	Liquid
Storage buffer	0.01M PBS, pH 7.4, 0.05% BSA, 50% Glycerol, 0.05% Sodium azide.
Concentration	1 mg/ml
Purity	>95% by SDS-PAGE.
Clonality	Monoclonal
Isotype	IgG
Applications	IHC, IP, WB
Target	VIL2, EZR, Villin-2, Ezrin, Cytovillin, p81
Purification	Protein A/G purified from cell culture supernatant.
Endotoxin level	Please contact with the lab for this information.
Accession	P15311
Stability and Storage	Use a manual defrost freezer and avoid repeated freeze thaw cycles. Store at 4 °C for frequent use. Store at -20 °C for twelve months from the date of receipt.
Note	For research use only.

Data Image



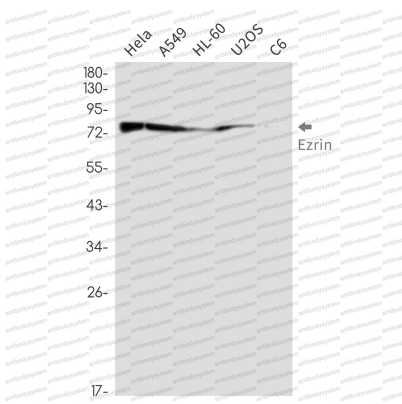
Immunohistochemical

Immunohistochemistry analysis of paraffin-embedded Human tonsil using Ezrin antibody. High-pressure and temperature Sodium Citrate pH 6.0 was used for antigen retrieval.



Western blot

Western blot analysis of Ezrin in MEF lysates using Ezrin antibody.



Western blot

Western blot analysis of Ezrin in HeLa, A549, HL-60, U2OS, C6 lysates using Ezrin antibody.