

Anti-ACP3 Antibody (R1P66)

Summary

Catalog No.	RHD10101
Clone ID	R1P66
Host species	Rabbit
Tested applications	IF: 1:50-1:200, IHC: 1:100-1:200, IP: 1:20-1:50, WB: 1:1000-1:2000
Species reactivity	Human
Form	Liquid
Storage buffer	0.01M PBS, pH 7.4, 0.05% BSA, 50% Glycerol, 0.05% Sodium azide.
Concentration	1 mg/ml
Purity	>95% by SDS-PAGE.
Clonality	Monoclonal
Isotype	IgG
Applications	IF, IHC, IP, WB
Target	Prostatic acid phosphatase, Thiamine monophosphatase, ACP3, TMPase, ACP3, Protein tyrosine phosphatase ACP3, 5'-nucleotidase, Acid phosphatase 3, PAP, 5'-NT, Ecto-5'-nucleotidase
Purification	Protein A/G purified from cell culture supernatant.
Endotoxin level	Please contact with the lab for this information.
Accession	P15309

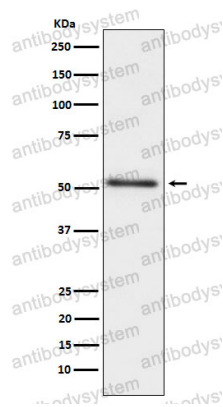
Stability and Storage

Use a manual defrost freezer and avoid repeated freeze thaw cycles. Store at 4 °C for frequent use. Store at -20 °C for twelve months from the date of receipt.

Note

For research use only.

Data Image



Western blot

Western blot analysis of PAP (prostatic acid phosphatase) expression in human prostate cancer lysate.