

Anti-ACP3 Antibody (R1P65)

Summary

Catalog No.	RHD10102
Clone ID	R1P65
Host species	Rabbit
Tested applications	IF: 1:50-1:200, IHC: 1:100-1:200, IP: 1:20-1:50, WB: 1:1000-1:2000
Species reactivity	Human, Mouse
Form	Liquid
Storage buffer	0.01M PBS, pH 7.4, 0.05% BSA, 50% Glycerol, 0.05% Sodium azide.
Concentration	1 mg/ml
Purity	>95% by SDS-PAGE.
Clonality	Monoclonal
Isotype	IgG
Applications	IF, IHC, IP, WB
Target	Prostatic acid phosphatase, Thiamine monophosphatase, ACP3, TMPase, ACP3, Protein tyrosine phosphatase ACP3, 5'-nucleotidase, Acid phosphatase 3, PAP, 5'-NT, Ecto-5'-nucleotidase
Purification	Protein A/G purified from cell culture supernatant.
Endotoxin level	Please contact with the lab for this information.
Accession	P15309

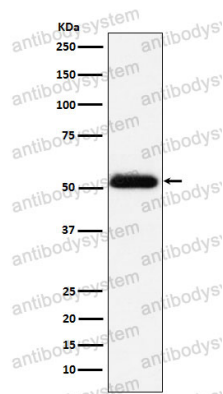
Stability and Storage

Use a manual defrost freezer and avoid repeated freeze thaw cycles. Store at 4 °C for frequent use. Store at -20 °C for twelve months from the date of receipt.

Note

For research use only.

Data Image



Western blot

Western blot analysis of Prostatic Acid Phosphatase expression in human prostate cancer lysate.