

Anti-IDO1 Antibody (R1P53)

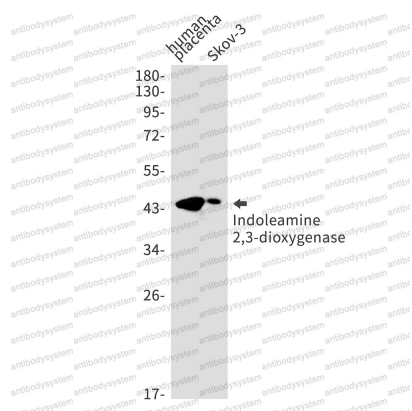
Summary

Catalog No.	RHD07501
Clone ID	R1P53
Host species	Rabbit
Tested applications	IF: 1:50-1:200, IHC: 1:50-1:100, IP: 1:20, WB: 1:500-1:1000
Species reactivity	Human
Form	Liquid
Storage buffer	0.01M PBS, pH 7.4, 0.05% BSA, 50% Glycerol, 0.05% Sodium azide.
Concentration	1 mg/ml
Purity	>95% by SDS-PAGE.
Clonality	Monoclonal
Isotype	IgG
Applications	IF, IHC, IP, WB
Target	INDO, IDO1, Indoleamine-pyrrole 2,3-dioxygenase, Indoleamine 2,3-dioxygenase 1, IDO-1, IDO
Purification	Protein A/G purified from cell culture supernatant.
Endotoxin level	Please contact with the lab for this information.
Accession	P14902
Stability and Storage	Use a manual defrost freezer and avoid repeated freeze thaw cycles. Store at 4 °C for frequent use. Store at -20 °C for twelve months from the date of receipt.

Note

For research use only.

Data Image



Western blot

Western blot analysis of Indoleamine 2, 3-dioxygenase in Human placenta, SKOV-3 lysates using Indoleamine 2, 3-dioxygenase antibody.