

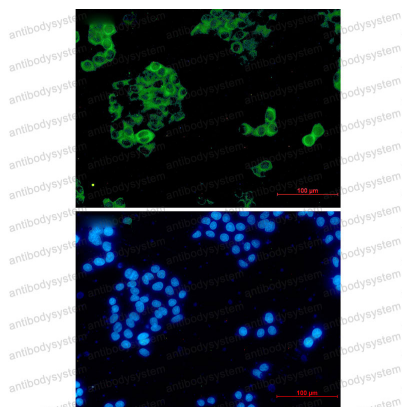
Anti-IDE Antibody (R1P46)

Summary

Catalog No.	RHD06503
Clone ID	R1P46
Host species	Rabbit
Tested applications	IF: 1:50-1:200, WB: 1:500-1:1000
Species reactivity	Human
Form	Liquid
Storage buffer	0.01M PBS, pH 7.4, 0.05% BSA, 50% Glycerol, 0.05% Sodium azide.
Concentration	1 mg/ml
Purity	>95% by SDS-PAGE.
Clonality	Monoclonal
Isotype	IgG
Applications	IF, WB
Target	Insulysin, IDE, Abeta-degrading protease, Insulin protease, Insulinase, Insulin-degrading enzyme
Purification	Protein A/G purified from cell culture supernatant.
Endotoxin level	Please contact with the lab for this information.
Accession	P14735
Stability and Storage	Use a manual defrost freezer and avoid repeated freeze thaw cycles. Store at 4 °C for frequent use. Store at -20 °C for twelve months from the date of receipt.

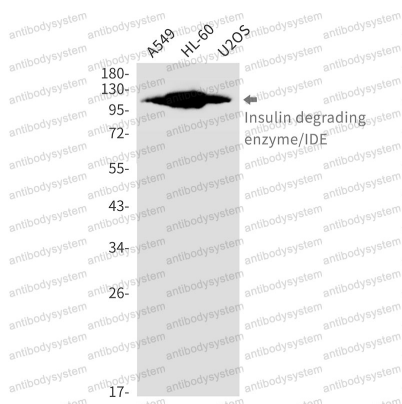
Note For research use only.

Data Image



Immunofluorescence

Immunocytochemistry analysis of Insulin degrading enzyme/IDE (green) in HeLa using Insulin degrading enzyme/IDE antibody and DAPI (blue)



Western blot

Western blot analysis of Insulin degrading enzyme/IDE in A549, HL-60, U2OS lysates using Insulin Degrading Enzyme antibody.