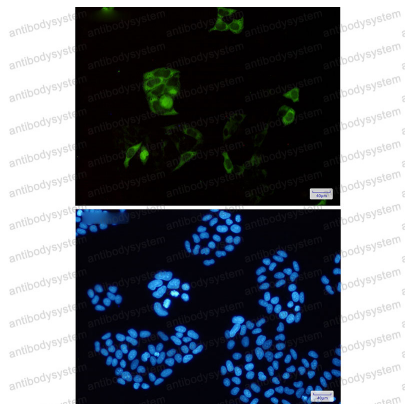


Anti-CCNB1 Antibody (R1P42)

Summary

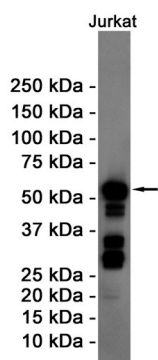
Catalog No.	RHD05701
Clone ID	R1P42
Host species	Rabbit
Tested applications	IF: 1:50-1:200, IP: 1:20, WB: 1:500-1:1000
Species reactivity	Human
Form	Liquid
Storage buffer	0.01M PBS, pH 7.4, 0.05% BSA, 50% Glycerol, 0.05% Sodium azide.
Concentration	1 mg/ml
Purity	>95% by SDS-PAGE.
Clonality	Monoclonal
Isotype	IgG
Applications	IF, IP, WB
Target	CCNB1, G2/mitotic-specific cyclin-B1, CCNB
Purification	Protein A/G purified from cell culture supernatant.
Endotoxin level	Please contact with the lab for this information.
Accession	P14635
Stability and Storage	Use a manual defrost freezer and avoid repeated freeze thaw cycles. Store at 4 °C for frequent use. Store at -20 °C for twelve months from the date of receipt.
Note	For research use only.

Data Image



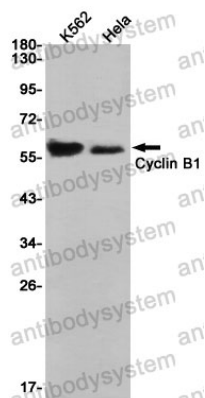
Immunofluorescence

Immunocytochemistry analysis of Cyclin B1(green) in Hela using Cyclin B1 antibody, and DAPI(blue)



Western blot

Western blot analysis of Cyclin B1 in Jurkat lysates using Cyclin B1 antibody.



Western blot

Western blot analysis of Cyclin B1 in K562, Hela lysates using Cyclin B1 antibody.