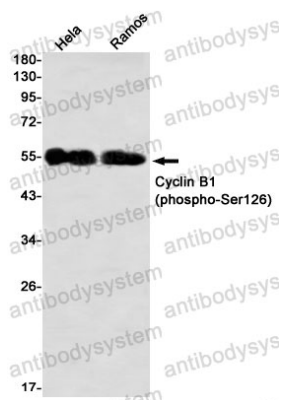


Anti-Phospho-CCNB1 (Ser126) Antibody (R1P41)

Summary

Catalog No.	RHD05702
Clone ID	R1P41
Host species	Rabbit
Tested applications	IP: 1:20, WB: 1:500-1:1000
Species reactivity	Human
Form	Liquid
Storage buffer	0.01M PBS, pH 7.4, 0.05% BSA, 50% Glycerol, 0.05% Sodium azide.
Concentration	1 mg/ml
Purity	>95% by SDS-PAGE.
Clonality	Monoclonal
Isotype	IgG
Applications	IP, WB
Target	CCNB1, G2/mitotic-specific cyclin-B1, CCNB
Purification	Protein A/G purified from cell culture supernatant.
Endotoxin level	Please contact with the lab for this information.
Accession	P14635
Stability and Storage	Use a manual defrost freezer and avoid repeated freeze thaw cycles. Store at 4 °C for frequent use. Store at -20 °C for twelve months from the date of receipt.
Note	For research use only.

Data Image



Western blot

Western blot analysis of Cyclin B1 (Phospho-Ser126) in HeLa, Ramos lysates using Phospho-Cyclin B1 (Ser126) antibody.