

Anti-PKM Antibody (R1P39)

Summary

Catalog No.	RHD05402
Clone ID	R1P39
Host species	Rabbit
Tested applications	FCM: 1:20-1:100, IF: 1:50-1:200, IHC: 1:100-1:200, WB: 1:1000-1:2000
Species reactivity	Human, Mouse, Rat
Form	Liquid
Storage buffer	0.01M PBS, pH 7.4, 0.05% BSA, 50% Glycerol, 0.05% Sodium azide.
Concentration	1 mg/ml
Purity	>95% by SDS-PAGE.
Clonality	Monoclonal
Isotype	IgG
Applications	FCM, IF, IHC, WB
Target	PK2, Opa-interacting protein 3, THBP1, Tumor M2-PK, PKM, Pyruvate kinase muscle isozyme, Thyroid hormone-binding protein 1, PK3, Pyruvate kinase 2/3, p58, CTHBP, PKM2, Pyruvate kinase PKM, OIP-3, Cytosolic thyroid hormone-binding protein, OIP3
Purification	Protein A/G purified from cell culture supernatant.
Endotoxin level	Please contact with the lab for this information.
Accession	P14618

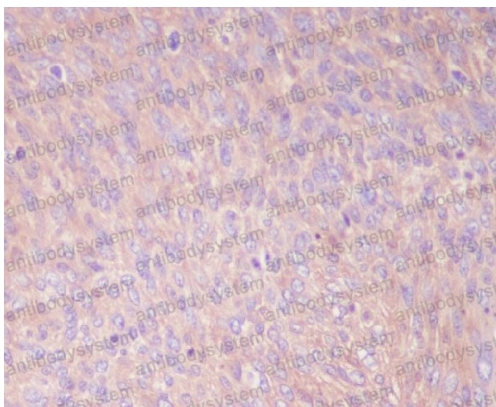
Recombinant Proteins & Antibodies

Stability and Storage

Use a manual defrost freezer and avoid repeated freeze thaw cycles. Store at 4 °C for frequent use. Store at -20 °C for twelve months from the date of receipt.

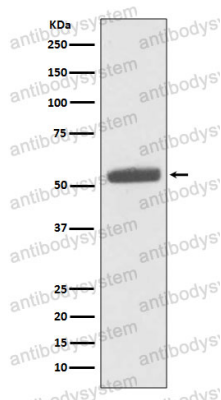
Note

For research use only.

Data Image

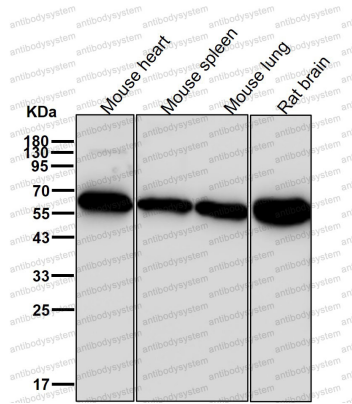
Immunohistochemical

Immunohistochemical analysis of paraffin-embedded human cervix cancer, using PKM2 Antibody.



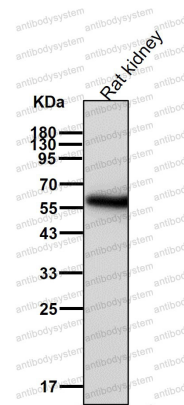
Western blot

Western blot analysis of PKM2 expression in HeLa cell lysate.



Western blot

All lanes use the Antibody at 1:2K dilution for 1 hour at room temperature.



Western blot

All lanes use the Antibody at 1:2K dilution for 1 hour at room temperature.