

Anti-PLA2G2A Antibody (R1P36)

Summary

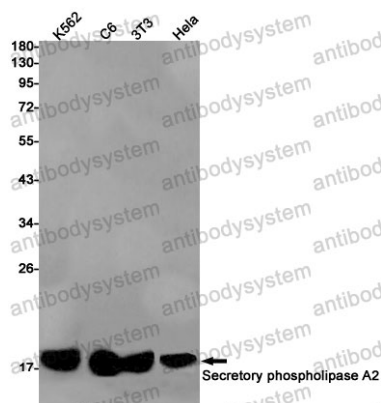
Catalog No.	RHD05101
Clone ID	R1P36
Host species	Rabbit
Tested applications	WB: 1:500-1:1000
Species reactivity	Human, Mouse, Rat
Form	Liquid
Storage buffer	0.01M PBS, pH 7.4, 0.05% BSA, 50% Glycerol, 0.05% Sodium azide.
Concentration	1 mg/ml
Purity	>95% by SDS-PAGE.
Clonality	Monoclonal
Isotype	IgG
Applications	WB
Target	Phosphatidylcholine 2-acylhydrolase 2A, NPS-PLA2, RASF-A, Non-pancreatic secretory phospholipase A2, Group IIA phospholipase A2, GIIC sPLA2, PLA2L, PLA2G2A, PLA2B, Phospholipase A2, membrane associated
Purification	Protein A/G purified from cell culture supernatant.
Endotoxin level	Please contact with the lab for this information.
Accession	P14555

Stability and Storage

Use a manual defrost freezer and avoid repeated freeze thaw cycles. Store at 4 °C for frequent use. Store at -20 °C for twelve months from the date of receipt.

Note

For research use only.

Data Image

Western blot

Western blot analysis of Secretory Phospho-lipase A2 in K562, C6, 3T3, HeLa lysates using Secretory Phospho-lipase A2 antibody.