

Anti-MIF/GIF Antibody (R1P25)

Summary

Catalog No.	RHD03401
Clone ID	R1P25
Host species	Rabbit
Tested applications	WB: 1:500-1:1000
Species reactivity	Human, Mouse, Rat
Form	Liquid
Storage buffer	0.01M PBS, pH 7.4, 0.05% BSA, 50% Glycerol, 0.05% Sodium azide.
Concentration	1 mg/ml
Purity	>95% by SDS-PAGE.
Clonality	Monoclonal
Isotype	IgG
Applications	WB
Target	MIF, L-dopachrome isomerase, L-dopachrome tautomerase, GIF, Macrophage migration inhibitory factor, MMIF, Phenylpyruvate tautomerase, Glycosylation-inhibiting factor, GLIF
Purification	Protein A/G purified from cell culture supernatant.
Endotoxin level	Please contact with the lab for this information.
Accession	P14174

Recombinant Proteins & Antibodies

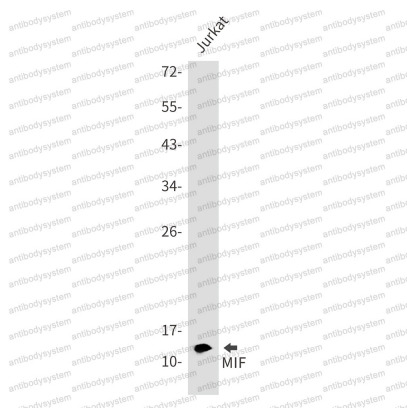
Stability and Storage

Use a manual defrost freezer and avoid repeated freeze thaw cycles. Store at 4 °C for frequent use. Store at -20 °C for twelve months from the date of receipt.

Note

For research use only.

Data Image



Western blot

Western blot analysis of MIF in Jurkat lysates using MIF antibody.



Western blot

Western blot analysis of MIF in C6, 3T3 lysates using MIF antibody.