

Anti-HSD17B1 Antibody (R1P21)

Summary

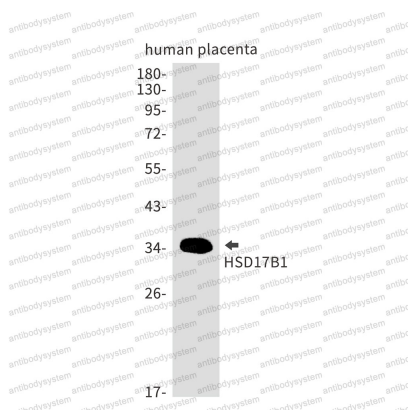
Catalog No.	RHD02901
Clone ID	R1P21
Host species	Rabbit
Tested applications	IF: 1:50-1:200, IHC: 1:50-1:100, IP: 1:20, WB: 1:500-1:1000
Species reactivity	Human
Form	Liquid
Storage buffer	0.01M PBS, pH 7.4, 0.05% BSA, 50% Glycerol, 0.05% Sodium azide.
Concentration	1 mg/ml
Purity	>95% by SDS-PAGE.
Clonality	Monoclonal
Isotype	IgG
Applications	IF, IHC, IP, WB
Target	EDH17B1, Short chain dehydrogenase/reductase family 28C member 1, EDHB17, Placental 17-beta-hydroxysteroid dehydrogenase, SDR28C1, 20 alpha-hydroxysteroid dehydrogenase, 20-alpha-HSD, HSD17B1, 17-beta-HSD 1, E2DH, Estradiol 17-beta-dehydrogenase 1, EDH17B2, E17KSR, 17-beta-hydroxysteroid dehydrogenase type 1
Purification	Protein A/G purified from cell culture supernatant.
Endotoxin level	Please contact with the lab for this information.
Accession	P14061

Stability and Storage

Use a manual defrost freezer and avoid repeated freeze thaw cycles. Store at 4 °C for frequent use. Store at -20 °C for twelve months from the date of receipt.

Note

For research use only.

Data Image

Western blot

Western blot analysis of HSD17B1 in Human placenta lysates using HSD17B1 antibody.