

Anti-ENO3 Antibody (R1P18)

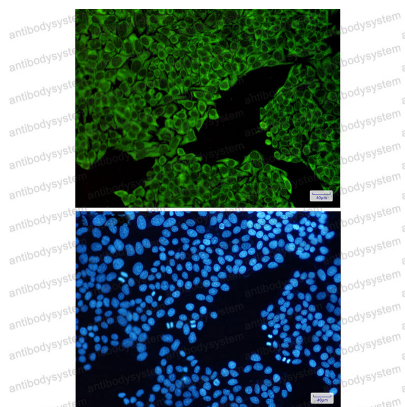
Summary

Catalog No.	RHD02001
Clone ID	R1P18
Host species	Rabbit
Tested applications	IF: 1:50-1:200, WB: 1:500-1:1000
Species reactivity	Human, Mouse, Rat
Form	Liquid
Storage buffer	0.01M PBS, pH 7.4, 0.05% BSA, 50% Glycerol, 0.05% Sodium azide.
Concentration	1 mg/ml
Purity	>95% by SDS-PAGE.
Clonality	Monoclonal
Isotype	IgG
Applications	IF, WB
Target	2-phospho-D-glycerate hydro-lyase, Muscle-specific enolase, Skeletal muscle enolase, ENO3, Enolase 3, Beta-enolase, MSE
Purification	Protein A/G purified from cell culture supernatant.
Endotoxin level	Please contact with the lab for this information.
Accession	P13929
Stability and Storage	Use a manual defrost freezer and avoid repeated freeze thaw cycles. Store at 4 °C for frequent use. Store at -20 °C for twelve months from the date of receipt.

Note

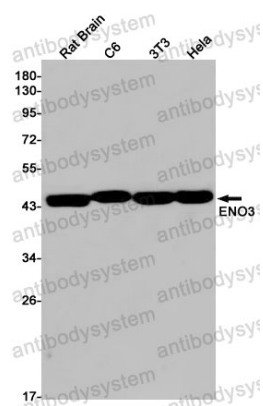
For research use only.

Data Image



Immunofluorescence

Immunocytochemistry analysis of
ENO1/ENO2/ENO3(green) in HeLa using
ENO1/ENO2/ENO3 antibody, and DAPI(blue)



Western blot

Western blot analysis of ENO3 in rat Brain, C6, 3T3,
HeLa lysates using ENO3 antibody.