

# Anti-PDIA4 Antibody (R1P01)

## Summary

---

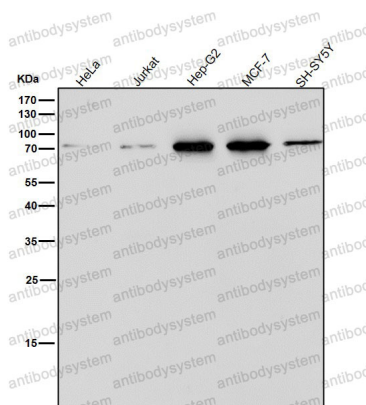
<b>Catalog No.</b>	RHC99602
<b>Clone ID</b>	R1P01
<b>Host species</b>	Rabbit
<b>Tested applications</b>	IHC: 1:100-1:200, WB: 1:1000-1:2000
<b>Species reactivity</b>	Human
<b>Form</b>	Liquid
<b>Storage buffer</b>	0.01M PBS, pH 7.4, 0.05% BSA, 50% Glycerol, 0.05% Sodium azide.
<b>Concentration</b>	1 mg/ml
<b>Purity</b>	>95% by SDS-PAGE.
<b>Clonality</b>	Monoclonal
<b>Isotype</b>	IgG
<b>Applications</b>	IHC, WB
<b>Target</b>	ERp-72, ER protein 70, ER protein 72, ERP70, Protein disulfide-isomerase A4, ERP72, PDIA4, Endoplasmic reticulum resident protein 72, ERp72, ERp70, Endoplasmic reticulum resident protein 70
<b>Purification</b>	Protein A/G purified from cell culture supernatant.
<b>Endotoxin level</b>	Please contact with the lab for this information.
<b>Accession</b>	P13667

**Stability and Storage**

Use a manual defrost freezer and avoid repeated freeze thaw cycles. Store at 4 °C for frequent use. Store at -20 °C for twelve months from the date of receipt.

**Note**

For research use only.

**Data Image**

Western blot

All lanes use the Antibody at 1:2K dilution for 1 hour at room temperature.