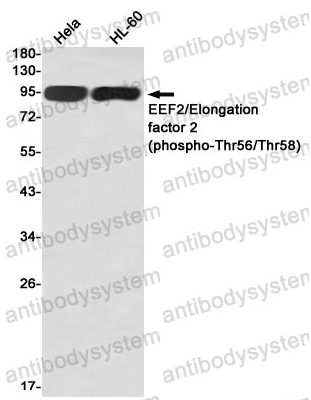


Anti-Phospho-EEF2 (Thr56/Thr58) Antibody (R1N96)

Summary

Catalog No.	RHC99103
Clone ID	R1N96
Host species	Rabbit
Tested applications	WB: 1:500-1:1000
Species reactivity	Human
Form	Liquid
Storage buffer	0.01M PBS, pH 7.4, 0.05% BSA, 50% Glycerol, 0.05% Sodium azide.
Concentration	1 mg/ml
Purity	>95% by SDS-PAGE.
Clonality	Monoclonal
Isotype	IgG
Applications	WB
Target	EF-2, EF2, EEF2, Elongation factor 2
Purification	Protein A/G purified from cell culture supernatant.
Endotoxin level	Please contact with the lab for this information.
Accession	P13639
Stability and Storage	Use a manual defrost freezer and avoid repeated freeze thaw cycles. Store at 4 °C for frequent use. Store at -20 °C for twelve months from the date of receipt.
Note	For research use only.

Data Image



Western blot

Western blot analysis of EEF2/Elongation factor 2 (Phospho-Thr56/Thr58) in HeLa, HL-60 lysates using Phospho-Elongation Factor 2 (Thr56/Thr58) antibody.