

Anti-Myosin Heavy Chain Antibody (R1N76)

Summary

Catalog No.	RHC95601
Clone ID	R1N76
Host species	Rabbit
Tested applications	IHC: 1:100-1:200, WB: 1:1000-1:2000
Species reactivity	Human, Mouse, Rat
Form	Liquid
Storage buffer	0.01M PBS, pH 7.4, 0.05% BSA, 50% Glycerol, 0.05% Sodium azide.
Concentration	1 mg/ml
Purity	>95% by SDS-PAGE.
Clonality	Monoclonal
Isotype	IgG
Applications	IHC, WB
Target	MYH7, Myosin heavy chain slow isoform, MyHC-beta, MyHC-slow, MYHCB, Myosin heavy chain 7, Myosin heavy chain, cardiac muscle beta isoform, Myosin-7
Purification	Protein A/G purified from cell culture supernatant.
Endotoxin level	Please contact with the lab for this information.
Accession	P12883, P13533

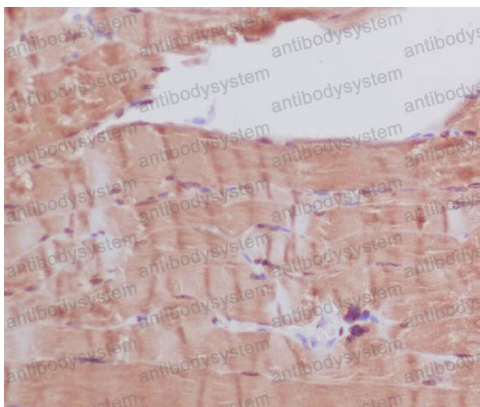
Recombinant Proteins & Antibodies

Stability and Storage

Use a manual defrost freezer and avoid repeated freeze thaw cycles. Store at 4 °C for frequent use. Store at -20 °C for twelve months from the date of receipt.

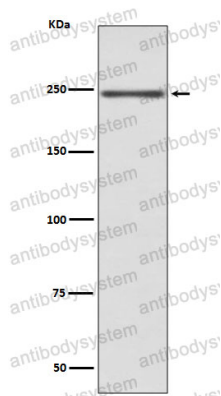
Note

For research use only.

Data Image

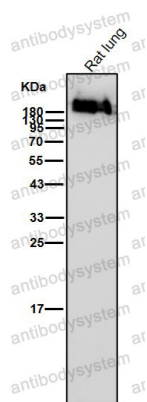
Immunohistochemical

Immunohistochemical analysis of paraffin-embedded human skeletal muscle, using Myosin heavy chain Antibody.



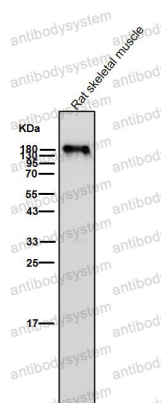
Western blot

Western blot analysis of Myosin heavy chain expression in mouse heart lysate.



Western blot

All lanes use the Antibody at 1:2K dilution for 1 hour at room temperature.



Western blot

All lanes use the Antibody at 1:2K dilution for 1 hour at room temperature.