

# Anti-Phospho-CD324/CDH1 (Ser838/Ser840) Antibody (R1N73)

## Summary

---

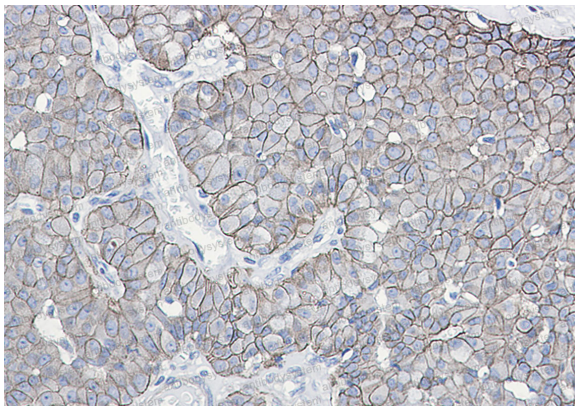
<b>Catalog No.</b>	RHC95203
<b>Clone ID</b>	R1N73
<b>Host species</b>	Rabbit
<b>Tested applications</b>	IHC: 1:50-1:100, IP: 1:20, WB: 1:500-1:1000
<b>Species reactivity</b>	Human, Mouse
<b>Form</b>	Liquid
<b>Storage buffer</b>	0.01M PBS, pH 7.4, 0.05% BSA, 50% Glycerol, 0.05% Sodium azide.
<b>Concentration</b>	1 mg/ml
<b>Purity</b>	>95% by SDS-PAGE.
<b>Clonality</b>	Monoclonal
<b>Isotype</b>	IgG
<b>Applications</b>	IHC, IP, WB
<b>Target</b>	CD324, Uvomorulin, Epithelial cadherin, E-cadherin, CDHE, CAM 120/80, UVO, CDH1, Cadherin-1
<b>Purification</b>	Protein A/G purified from cell culture supernatant.
<b>Endotoxin level</b>	Please contact with the lab for this information.
<b>Accession</b>	P12830

**Stability and Storage**

Use a manual defrost freezer and avoid repeated freeze thaw cycles. Store at 4 °C for frequent use. Store at -20 °C for twelve months from the date of receipt.

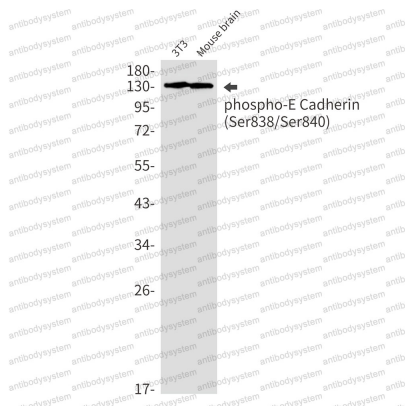
**Note**

For research use only.

**Data Image**

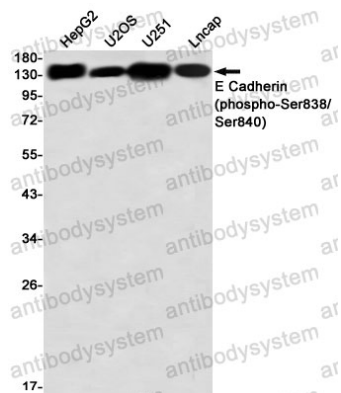
**Immunohistochemical**

Immunohistochemistry analysis of paraffin-embedded Human breast cancer using E Cadherin (Phospho-Ser838/Ser840) antibody. High-pressure and temperature Sodium Citrate pH 6.0 was used for antigen retrieval.



**Western blot**

Western blot analysis of Phospho-E Cadherin (Ser838/Ser840) in 3T3, mouse brain lysates using Phospho-E Cadherin (Ser838/Ser840) antibody.



Western blot

Western blot analysis of E Cadherin (Phospho-Ser838/Ser840) in HepG2, U2OS, U251, Lncap lysates using E Cadherin (Phospho-Ser838/Ser840) antibody.