

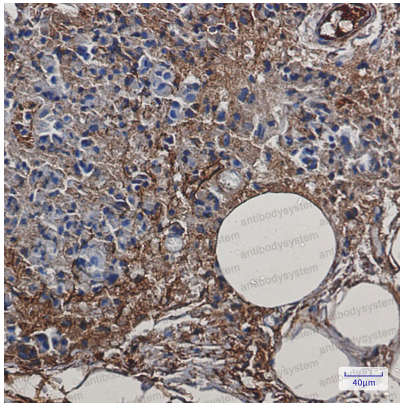
Anti-CKB Antibody (R1N65)

Summary

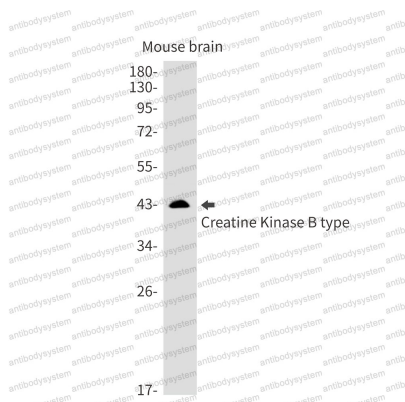
Catalog No.	RHC93303
Clone ID	R1N65
Host species	Rabbit
Tested applications	IHC: 1:50-1:100, WB: 1:500-1:1000
Species reactivity	Human, Mouse, Rat
Form	Liquid
Storage buffer	0.01M PBS, pH 7.4, 0.05% BSA, 50% Glycerol, 0.05% Sodium azide.
Concentration	1 mg/ml
Purity	>95% by SDS-PAGE.
Clonality	Monoclonal
Isotype	IgG
Applications	IHC, WB
Target	Creatine phosphokinase B-type, Creatine kinase B-type, CKBB, CPK-B, Brain creatine kinase, Creatine kinase B chain, B-CK, CKB
Purification	Protein A/G purified from cell culture supernatant.
Endotoxin level	Please contact with the lab for this information.
Accession	P12277
Stability and Storage	Use a manual defrost freezer and avoid repeated freeze thaw cycles. Store at 4 °C for frequent use. Store at -20 °C for twelve months from the date of receipt.

Note

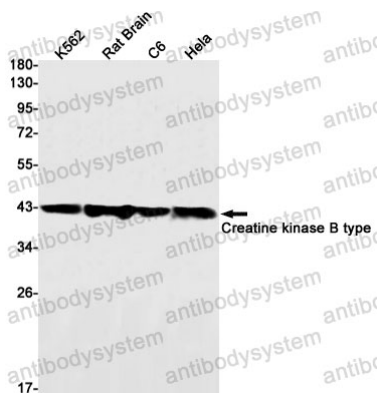
For research use only.

Data Image**Immunohistochemical**

Immunohistochemistry analysis of paraffin-embedded Human breast cancer using Creatine kinase B type antibody. High-pressure and temperature Sodium Citrate pH 6.0 was used for antigen retrieval.

**Western blot**

Western blot analysis of Creatine Kinase B type in mouse brain lysates using Creatine Kinase B type antibody.



Western blot

Western blot analysis of Creatine kinase B type in K562, rat Brain, C6, HeLa lysates using Creatine kinase B type antibody.