

Anti-PIP Antibody (R1N62)

Summary

Catalog No.	RHC93201
Clone ID	R1N62
Host species	Rabbit
Tested applications	IF: 1:50-1:200, IP: 1:20-1:50, WB: 1:1000-1:2000
Species reactivity	Human
Form	Liquid
Storage buffer	0.01M PBS, pH 7.4, 0.05% BSA, 50% Glycerol, 0.05% Sodium azide.
Concentration	1 mg/ml
Purity	>95% by SDS-PAGE.
Clonality	Monoclonal
Isotype	IgG
Applications	IF, IP, WB
Target	Prolactin-inducible protein, PIP, Secretory actin-binding protein, GCDFP15, Gross cystic disease fluid protein 15, gp17, SABP, Prolactin-induced protein, GPIP4, GCDFP-15
Purification	Protein A/G purified from cell culture supernatant.
Endotoxin level	Please contact with the lab for this information.
Accession	P12273

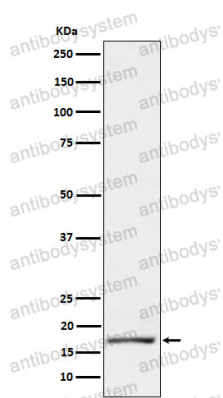
Stability and Storage

Use a manual defrost freezer and avoid repeated freeze thaw cycles. Store at 4 °C for frequent use. Store at -20 °C for twelve months from the date of receipt.

Note

For research use only.

Data Image



Western blot

Western blot analysis of GCDFP 15 expression in T47D cell lysate.