

# Anti-IMPDH2 Antibody (R1N60)

## Summary

---

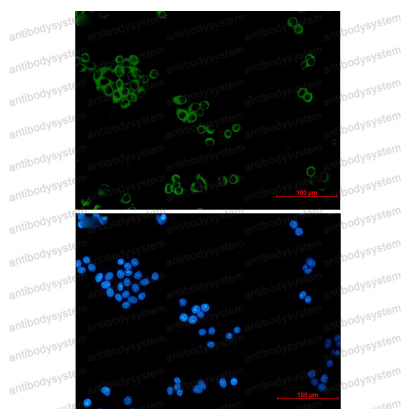
<b>Catalog No.</b>	RHC92801
<b>Clone ID</b>	R1N60
<b>Host species</b>	Rabbit
<b>Tested applications</b>	IF: 1:50-1:200, IHC: 1:50-1:100, IP: 1:20, WB: 1:500-1:1000
<b>Species reactivity</b>	Human, Mouse, Rat
<b>Form</b>	Liquid
<b>Storage buffer</b>	0.01M PBS, pH 7.4, 0.05% BSA, 50% Glycerol, 0.05% Sodium azide.
<b>Concentration</b>	1 mg/ml
<b>Purity</b>	>95% by SDS-PAGE.
<b>Clonality</b>	Monoclonal
<b>Isotype</b>	IgG
<b>Applications</b>	IF, IHC, IP, WB
<b>Target</b>	IMPDH-II, IMPD 2, IMPD2, IMPDH2, IMPDH 2, Inosine-5'-monophosphate dehydrogenase 2, IMP dehydrogenase 2
<b>Purification</b>	Protein A/G purified from cell culture supernatant.
<b>Endotoxin level</b>	Please contact with the lab for this information.
<b>Accession</b>	P12268
<b>Stability and Storage</b>	Use a manual defrost freezer and avoid repeated freeze thaw cycles. Store at 4 °C for frequent use. Store at -20 °C for twelve months from the date of receipt.

**Note**

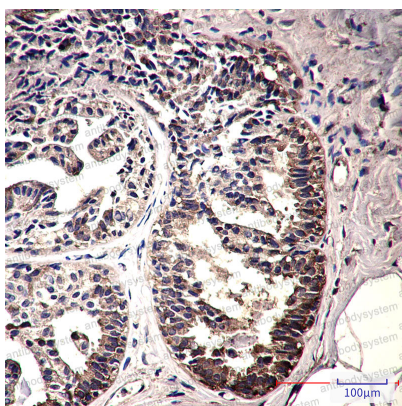
For research use only.

**Data Image**

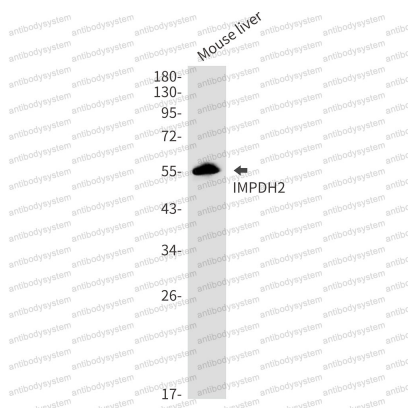
---

**Immunofluorescence**

Immunocytochemistry analysis of IMPDH2 (green) in Hela using IMPDH2 antibody, and DAPI (blue).

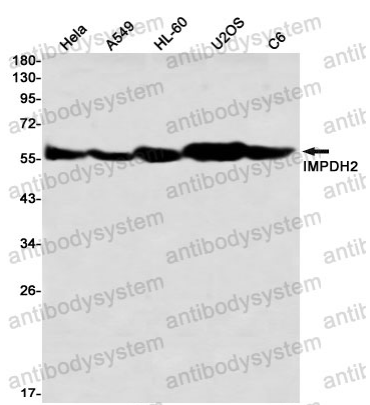
**Immunohistochemical**

Immunohistochemistry analysis of paraffin-embedded Human breast cancer using IMPDH2 antibody. High-pressure and temperature Sodium Citrate pH 6.0 was used for antigen retrieval.



Western blot

Western blot analysis of IMPDH2 in 3T3, mouse liver lysates using IMPDH2 antibody.



Western blot

Western blot analysis of IMPDH2 in Hela, A549, HL-60, U2OS, C6 lysates using IMPDH2 antibody